

03/85



MARCH MEETING = HOW WOULD YOU LIKE TO...? by Richard van Zijl

How would you like to ask questions of the director of Porsche Motorsports North America?

How would you like to be addressed by the winner of the Miami Grand Prix, the 1983 24 Hours of Le Mans, and many other famous automobile races?

How would you like to talk to the owner of Holbert Racing?

How would you like to find out about how Porsche AG intends to increase its presence in the United States? Possibly an appearance at Indy and campaigning a F1 car as soon as TAG'S exclusive contract expires.

All this will be made possible at our March meeting!

AL HOLBERT, despite gruelling pressures and schedules, has offered to speak at our March meeting. By demanding excellence Holbert has built a winning race team. His technical and engineering experience and expertise, the same standards as required by Porsche, promises to make this a very interesting meeting for all of us Porsche fanatics.

The club will be supplying a keg of beer to encourage some of the more "probing" questions from the attendees.

The meeting will be held - PLEASE NOTE - at the George Washington Motor Lodge in KING of PRUSSIA, not Plymouth Meeting. The meeting will start at 8:00 on 03/27/85.

Please join us for dinner at 6:30 at the Motor Lodge.

The King of Prussia George Washington Motor Lodge is located at the Betzwood Exit off Route 202 South.

RIESENTÖTER WOMEN'S TEA AND TALK FIRST SOCIAL EVENT OF 1985 by Eileen Checkowski

DATE: Sunday March 24 (Don't look for a mailer, as originally planned)

TIME: 1:00 p.m. to 5:00 p.m.

R.S.V.P. via telephone by March 21 584-0776

WHERE: Tony and Eileen Checkowski's

822 Tricorn Drive

Lansdale, PA 19446

NEAR: Route 363 and Morris Road - Sugar Valley development. Look for a gold/brown house with blue light outside. Call for directions.

A casual Tea And Talk afternoon. Come and meet others like yourself and find out the whys of your husband's past time with "thee car". Plan with others how to get him out of the car or get yourself into it. Just because he is driving the best production car in the world doesn't mean that he has to live and sleep in it. We will discuss what the club does for its women, how one can get more out of the club, and we will meet new and interesting friends.

If you'll give me a call, I'll be sure to have enough goodies to eat and drink.

Have your other half drop you off at 1:00p.m. and pick you up at 5:00p.m. - else come solo. Parking is safe hereabouts.

DER GASSER

Our annual Wine Tasting bash is set for April 24, 1985 at the Meadowlands Country Club, Blue Bell, PA. Keeping with tradition, this social event is held in lieu of the regular monthly meeting. We will have a stand-up wine tasting hour (as opposed to a fall-down wine tasting hour? - ed.) beginning at 7:00p.m. with dinner being served at 8:00.

Entrees include a choice of Chicken Cordon Bleu with Duxelle cream sauce or broiled flounder with a lemon butter sauce. Either dish comes with Fettuccine Alfredo, green beans with walnuts, and carrots with pineapple.

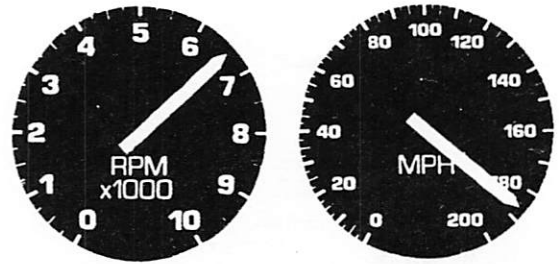
Parking will be reserved for all Porsches on the right side as you drive in. An attendant will direct you, but park yourself. You can get valet parking by pulling up to the main entrance.

The Meadowlands Country Club is located in Blue Bell, PA off Plymouth Road. From Morris Road, make a left onto Plymouth Road if heading North, or make a right if heading South. The club is about half a mile down Plymouth Road. It is a stately looking golf club having been there for many years. We will have the main dining area of the club with its beautiful view of the golf course.

We sincerely hope that you will plan to join us and help to make the first Social Event of the year a big success.

Please send your check for \$19.95 per person made payable to Reisentöter, P.C.A. to Tony and Eileen Checkowski by April 17. Be sure to indicate your choice of chicken or fish.

Like the 1984 Rally, ANNACAN '85 is an endurance rally designed to test driver, vehicle, and navigational skills over a course of approximately 450 miles.



The primary objective in ANNACAN is to record the lowest elapsed time from start to finish. However, since there is no direct freeway, route planning and navigation are at least as important as the speed at which you drive. You pick your own route between the start and finish lines, and there are a variety of interstate highways, country roads, and radar speed traps from which to choose.

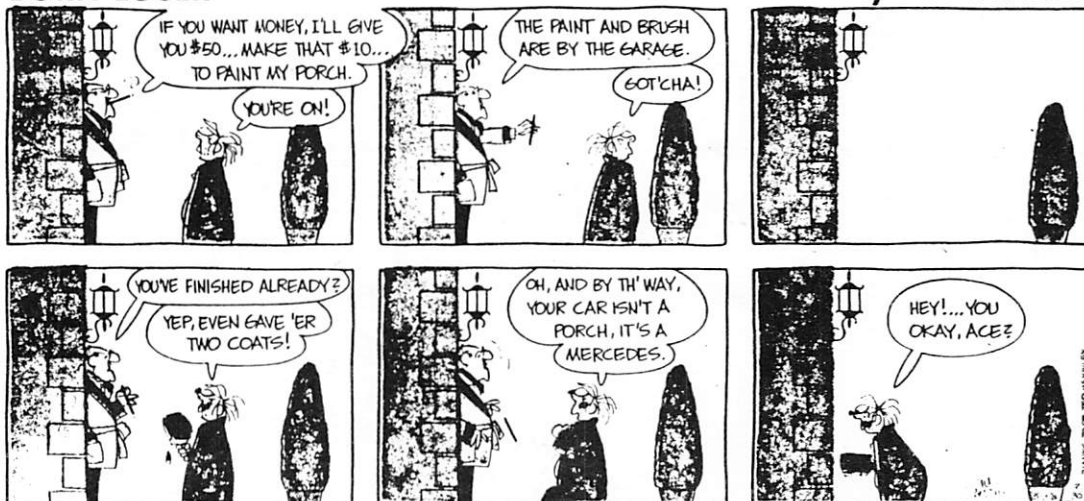
ANNACAN '85 runs on Saturday, April 27, 1985. The first car will leave the starting line in Annapolis, Maryland at 7:30a.m., followed by the other entrants at 3 minute intervals. The finish line is on Goat Island between the Canadian and American falls in Niagara Falls, New York.

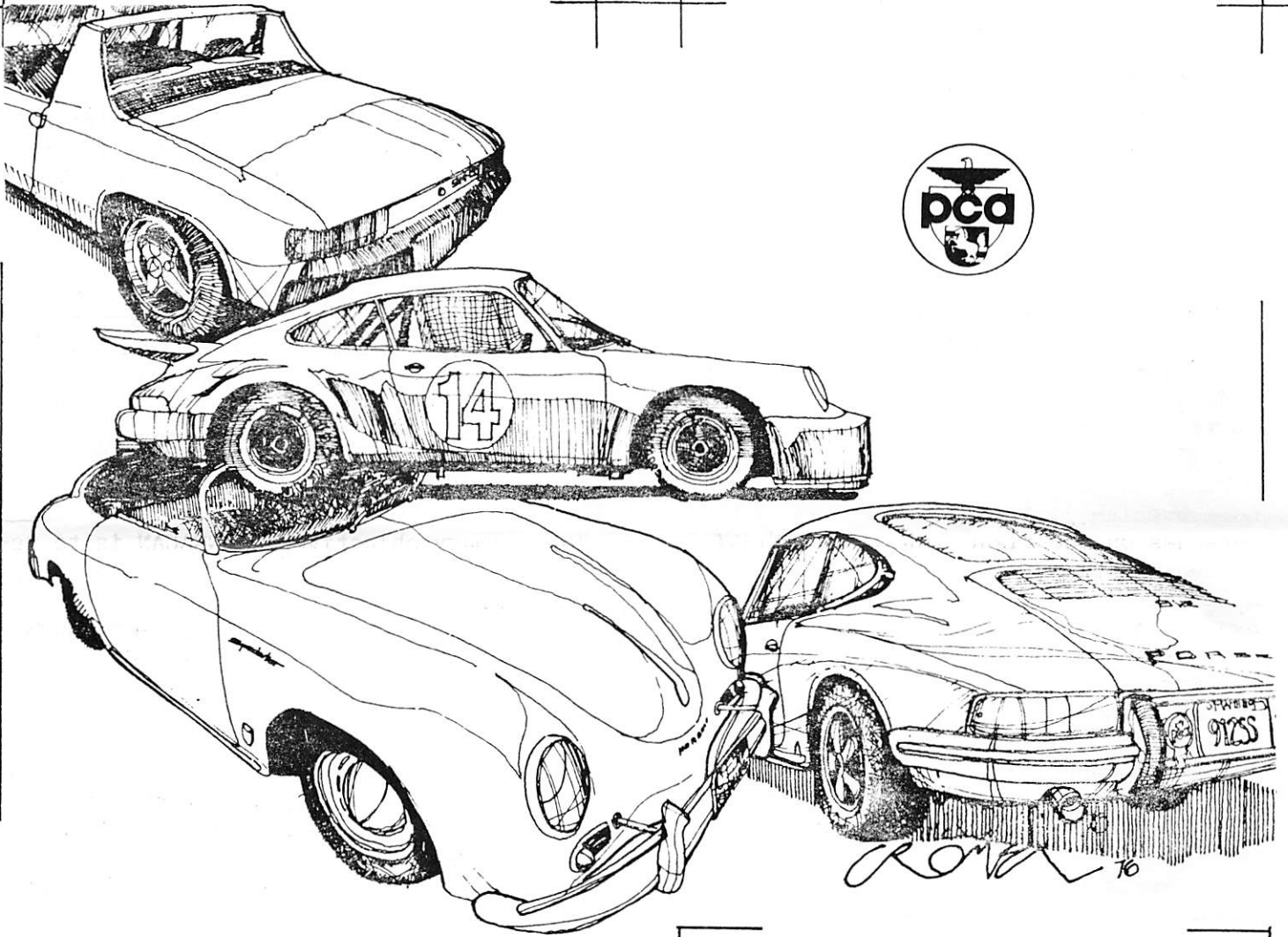
Following the rally, there will be a party at a Niagara Falls nightclub. Awards will be presented, food and drink consumed, and "war" stories told.

(cond on pg 6)

BORN LOSER®

by Art Sansom





CHASE & HECKMAN

INSURANCE

709 BETHLEHEM PIKE
PHILADELPHIA, PA. 19118

CITY 248-4445
SUBURBS 836-1274
HOME 836-9168



PRECISION MOTOR WORKS

Expert Mechanics Servicing All Porsches
Large Inventory Of Parts



Call Bob Koerbel 527-6025 Roberts Rd, Bryn Mawr

CHASE & HECKMAN is able to insure your Porsche, regular autos and home by special arrangements with a major U. S. Insurance Company, at competitive prices, without using the Assigned Risk or substandard markets. Please call John Heckman for details, or see him at the next club function.



John D. Heckman
Broker

ALL TYPES OF INSURANCE

PRESIDENT'S MESSAGE
by Michael Stolper

I have had a persistent, disturbing preoccupation with an unreasonable idea since August of last year. I have been attempting to import a grey market 930 for my personal use. For the uninitiated, a grey market car is one which was manufactured for a market other than that of the U.S., and therefore is unavailable through regular dealerships in this country. Since last summer, I have dealt with foreign tongued middlemen, European dealerships, foreign currency experts, international bankers, shippers, marine insurers, long shoremen, the U.S. customs, the E.P.A., the D.O.T., conversion shops, the Commonwealth of Pennsylvania, and my wife.

These are simple endeavors if one happens to embody the characteristics of a linguist, international financier, union expert, bonding agent, Government lobbyist, Porsche factory mechanic, politician, and marriage counselor.

A recent visit to U.S. customs in Wilmington by my wife Jane, Richard van Zijl, and myself reminded me of the scene from The Wizard of Oz when Dorothy, the Lion, the Scarecrow, the Tin Man, and Toto meet the Oz for the first time. "Bring me the witch's broom," the customs officer said. "The great and powerful Oz has spoken."

Today, if the heavens will permit, I will pick up my alleged 930. I apologize in advance to those of you who may try to reach me in the next few weeks. I will probably be burning around Chester County somewhere. If any of you are thinking of importing your own cars, do yourselves a favor and call me first.

Thank you Bob Russo for arranging the February meeting with John Petrella of Bell/Racestar. The meeting, which was on safety equipment for our bodies and our Porsches, featured John trying to set his hand on fire with a blow torch through a piece of NOMEX cloth. John was unsuccessful, but the meeting was very informative and well attended (60). I look forward to seeing you all (maybe not all) at the KING OF PRUSSIA (not Plymouth Meeting/Norristown) George Washington Motor Lodge on the 27th of March. Al Holbert is our speaker. (See Richard van Zijl's article on page one.)

Plan now to attend!

COMPETITION
DOING THE GLEN IN STYLE
by Al Anderson

By now you have probably heard that we have secured Watkin's Glen for October 18, 19, and 20. We will be sharing the honors with Potomac Region. This event is planned to be an enjoyable weekend for our club. There will be a 150 car limit to assure plenty of track time, and there will be a social at the Glen Club.

Those of you who have already done the Glen know what a thrill it is to drive this nostalgic track. The Glen is back, big and beautiful, no "Bog", and very much updated. Those of us who were there last October had a great time with the exception of experiencing too little track time. I would like to see a real Riesentöter turn out. We will have pre-registration for club members.

If you are planning to go and you have never done a track event before, I strongly suggest you drive one or two other track events before you do the Glen. It is a very fast and challenging track. Riesentöter has a three day event at Summit Point in June -- a good tune-up for the Glen. Our Summit Point event is also a PATTS event for you time trials enthusiasts.

Riesentöter is also holding the last track event of the season at Summit Point in November. This will also be a duel event with Potomac Region. We'll have some surprises for you at this one (ever run Summit Point backwards?).

This year is shaping up to be a big one for Riesentöter trackers. Support your club! Remember, these events are for your education and enjoyment. See you at the track.



CLASSIFIEDS

FOR SALE: '76 914 2.0 #4762903974, white w/tan, app. group, Blaup. am/fm, new Pirellis, bra, extras, exc. cond. \$5900. John Hrapchak (301)964-2623(H) (301)677-6171(W).

FOR SALE: '74 RSR, original factory-built race car. Genuine item complete w/orig. black 917 alloys. Interesting racing hist. Roller or race ready. Specs on request. V/nice and priced reas. Joe Cogbill (912)742-1067 (912)743-7112.

FOR SALE: '50 Chevrolet Delux 4 Door. Auto., radio, heat., clock. Orig. & comp. to own's. man. Silver w/black top. 65K miles. \$1000. Tony Bonanni 827-9469(H) 828-7965(W).

FOR SALE: '81 911 SC Cpe. #WPOAA0914BS12-0968, black/black, Recaros, S/R, A/C, P/W, sport sus., Blaup., mud flaps, bra, Rupert restraint sys., alarm, heated & tinted W/S, 100 watt lights, AJR oil cooler, F&R spoilers, lowered & aligned, 21mm & 23mm tor. bars, 16" alloys, 10,000 miles, stored winters, showroom cond., \$29,900. Stephen Syderman (215)624-1487 (215) 535-0112.

FOR SALE: '79 924 #9249201544, Dolomite gray, 27,000 miles, garaged, A/C, P/W, P/M, R/wiper, S/R, extras. Lee Felinton 872-7683.

WANTED: Sports car club newsletter editor/ editoress(!) for 1986 season. No experience necessary. Will train. John Heckman 836-9168(H) 248-4445(W).

PORSCHE DRIVING FEST - AN UPDATE
by Tony Checkowski

In last month's Der Gasser I had written an article on the captioned fest. The response to the idea has been favorable, and we are scheduling the fest for early June.

To date we have 7 cars entered including a U.S.930, a grey market 930, a 356-B Cabriolet, a 914 2.0, a 911T, a 911S, and (an extremely rare and beautiful -ed.) 912E.

If you would like to participate, call me now. Entrance is limited, so act quickly. My telephone number can be found on page 7 of this issue.

Come out and be active! I don't think you'll be disappointed.

1985 S.C.C.A. AUTOCROSS
EVENTS NEAR HARRISBURG
by Vern Lyle

- April 21 - Harrisburg Farm Show. Mirror image courses, Pro-Solo practice.
- May 12 - Harrisburg Farm Show.
- May 18 - York Hospital Fete.
- May 26 - Harrisburg Farm Show.
- June 22-23 - Pro-Solo at Farm Show.
- July 14 - Farm Show.
- Aug. 11-12 - N.E. Divisional Solo II.
- Aug. 18 - Chambersburg.
- Sept. 8 - Chambersburg.
- Sept. 15 - Farm Show.

Autocross your PORSCHE

Better than new.



The finest quality materials and workmanship went into your Porsche when it was new. It's only natural that you should expect equal quality and workmanship when you need repairs. At Clark's you get it... and more. You see at Clark's we really care about your Porsche and you. We put that extra tender love and care into all of our body work. It's what makes our work "better than new." When you need help with your Porsche call us... we'll talk to you because like we said, we really do care about your car and you! Minor repairs to complete restoration.

(215) 944-9304

Clark's Auto Body & Frame Alignment
Pricetown Road & Rt. 662
Pricetown, Pa.

COMPETITION
1985 Tentative Track Event Schedule
WATCH HERE FOR UPDATES
by Al Anderson

DATE	REGION	TRACK	COMMENTS
03/28-30	CVR	LR	
04/05-06	POT	SP	Inst.'s Schl. 4/5
04/12-13	MNY	LR	
04/26	H-C	LR	
05/3-4	NNJ	LR	Closed Event
05/9&11	CVR	LR	T.T. & PATTS I
05/10	SBM	LR	
05/25	POT	SP	
06/1-2	NNJ	PO	Long Course
06/15-16	Zone 1	WG	Closed Event
06/21-23	RTR	SP	T.T. & PATTS II
07/6-7	NNJ	MO	
07/24-25	NNJ	LR	
07/26	SBM	LR	
08/15-16	CVR	LR	
08/17-18	SBM	PO	Tent.
08/24-25	POT	SP	T.T. & PATTS III
09/05	MNY	LR	
09/6-7	NNJ	LR	
10/18	CVR	LR	
10/19-20	RTR&POT	WG	
10/19-20	NNJ	PO	Short Course
11/01	H-C	LR	
11/02	SBM	LR	
11/08	CVR	LR	
11/16-17	RTR&POT	SP	

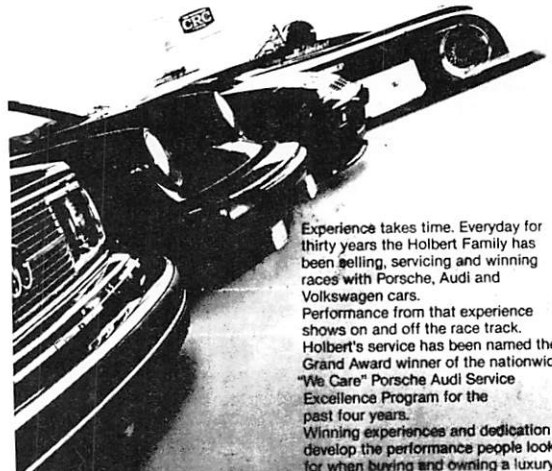
CODES

LR=Lime Rock
SP=Summit Point
PO=Pocono
WG=Watkin's Glen
MO=Mossport
RTR=Riesentöter
CVR=Conn. Valley
POT=Potomac
MNY=Metro. N.Y.
H-C=Hudson-Champlain
NNJ=Northern New Jersey
SBM=Schattenbaum



Carrera
RACING and RESTORATION INC.
PORSCHE
Sales • Service • Parts • Restoration • Performance Upgrading
609-268-9356

PERFORMANCE FROM EXPERIENCE



Experience takes time. Everyday for thirty years the Holbert Family has been selling, servicing and winning races with Porsche, Audi and Volkswagen cars. Performance from that experience shows on and off the race track. Holbert's service has been named the Grand Award winner of the nationwide "We Care" Porsche Audi Service Excellence Program for the past four years. Winning experiences and dedication develop the performance people look for when buying and owning a luxury or economy car. Come to Holbert's for your Porsche, Audi or Volkswagen.



RR 875 Warrington, Pa. (6 miles North of Willow Grove)
P/A 268-2890 - VW 243-1600 Leasing and Body Repair

ANNACAN '85 (cond frm pg 2)

There is an entry fee of \$40.00 (\$50.00 after April 20) for each car, which contributes to the award purse. First place wins a trophy and 75% of the purse, second place takes a trophy and 25% of the purse, and third place gets a trophy. All participants get to have lots of fun, drive (fly?) through some beautiful country, and see the sights at Niagara Falls.

The prize winners in ANNACAN '84 were: 1st VW Rabbit GTI, 6 hrs 43 min, \$210 + trophy; 2nd 1964 Plymouth (?!), 7 hrs 29 min, \$70 + trophy; 3rd Porsche 914, 7 hrs 47 min, plaque.

Five other equally diverse cars also started the race, taking as long as 10 hours to finish. An important lesson learned was that navigation and route planning are much more important than the car's top speed.

All drivers must be at least 18 years old and have a valid driver's license. Any passengers (a navigator is recommended) must also be at least 18. Any licensed car may be entered, but motorcycles are not permitted.

For more information call (301) 987-0382. ANNACAN is not affiliated with Riesentöter Region Porsche Club of America in any way.

1985 EXECUTIVE COMMITTEE

PRESIDENT

Michael Stolper
1504 E. Grand Oak Lane
West Chester, PA 19380
696-6018(H) 496-2267(W)

PAST PRESIDENT

Bill Cooper
659 Brighton Drive
Hatfield, PA 19440
362-2770(H) 825-5257(W)

VICE-PRESIDENT

Richard Van Zijl
144 Sugartown Rd.
Malvern, PA 19355
296-8862(H) 854-6483(W)

COMPETITION

Al Anderson
1015 Thomas Rd.
Norristown, PA 19401
275-8605(H)

TREASURER

Skip Corey
108 Michaels Drive
Wallingford, PA 19086
874-3201(H) 766-8109(W)

COMPETITION

Larry Herman
8108 Hull Drive
Wyndmoor, PA 19118
233-5845(H)

SECRETARY

Debbie Richards Cooper
659 Brighton Drive
Hatfield, PA 19440
362-2770(H)

COMPETITION

Russ Hunsberger
324 Blue School Rd.
Perkasie, PA 18944
257-6051(H)

MEMBERSHIP

Betsi Marsh
131 Green St.
Lansdale, PA 19446
368-8277(H)

SAFETY

Bob Patton
138 Merlin Rd.
Phoenixville, PA 19460
935-1725(H) 648-2949(W)

TECHNICAL

Don Galbraith
13 Cobblestone Dr.
Paoli, PA 19301
644-9079(H) 644-4911(W)

ZONE 2 REPRESENTATIVE

Bob Holland
305 Staghorn Way
West Chester, PA 19380
436-6577(H) 647-8100(W)

GOODIE STORE

Gloria Auer
255 Clinton Court
Holland, PA 18966
860-0736(H)

EDITORS

John & Jill Heckman
709 Bethlehem Pike
Phila., PA 19118
836-9168(H) 248-4445(W)

SOCIAL

Tony & Eileen Checkowski
822 Tricorn Drive
Lansdale, PA 19446
584-0776(H) 638-1300(W)

2101 E. King Street, Malvern, (215) 644-4911



Sales
Service
Repairs
Parts

**FIRST TECH SESSION
SLATED FOR HOLBERT'S
by Don Galbraith**

Our first tech session will be on Saturday, April 13 at Holbert's Porsche-Audi in Warrington. The time is 9:00a.m. to about 3:00p.m.

A tech session offers the opportunity to accomplish those small to medium operations which are made easier by: a) lifts, b) oil drain equipment, c) compressed air, d) certain special tools, e) free advice, f) warm garage.

There will be a nominal charge for each lift.

Holbert's very experienced mechanic Walt will be available for help, and the parts department will be open.

You are encouraged to bring your car out and make use of the facilities that our hosts are making available to us. If you need to use a lift, by all means use one. But please, if your work can be done without a lift, don't tie one up as someone will probably be waiting to get on. With a little consideration from everyone, everyone should be able to accomplish what they wish.

See you there!

Look to NTW for Tire Value

Attention . . . All Car Club Members

NTW is offering you these great tire prices simply by showing us your NTW discount card, or your club membership card.

Goodrich		PIRELLI	
Comp. TA		P-6 P-7	
185-70R12 80-63	275-80VR15 147-36	185-80HR13 75-72	185-80VR15 182-80
195-70R14 100-84	275-80VR15 156-32	205-80HR12 90-80	205-80VR15 171-36
205-70R16 100-74	195-50VR15 100-62	185-85HR14 75-80	275-80VR15 194-60
185-70VR15 100-62	205-50VR15 121-00	185-80HR16 85-81	285-80VR15 240-84
205-50VR12 100-62	275-50VR15 152-63	185-80HR16 97-87	250-80VR15 228-80
195-80VR16 118-63	275-50VR15 208-62	205-80HR16 101-20	345-28VR15 274-88
275-80VR14 123-67	275-50VR15 222-62	275-80HR16 110-20	205-80VR16 180-72
275-80VR15 130-21	205-55VR16 200-80	275-80VR14 120-83	275-80VR16 210-61
275-80VR15 138-21	275-50VR16 212-86	185-80VR15 101-80	265-80VR16 220-80
RADIAL 80		RADIAL 70	
205-80HR12 83-16	175-70HR11 74-63	205-80VR15 126-64	
195-80HR14 89-68	185-70HR12 77-86	215-80VR15 142-83	
275-80HR16 100-33	185-70HR14 83-16	275-80VR15 175-26	
275-80HR16 100-33	195-70HR14 83-16	275-80VR16 191-63	
205-80VR15 91-67	205-70HR14 88-86		
275-80VR15 103-14	275-70VR15 100-21		
FULDA Y-2000		KONI SHOCKS	
185-80HR12 74-63	195-80VR15 90-27	35% OFF LIST	
205-80HR13 79-37	205-80VR15 128-17	BILSTEIN SHOCKS	
185-80HR16 73-21	275-50VR15 148-80	20% OFF LIST	
195-80HR16 89-62	205-50VR16 150-80	WITH INSTALLATION AVAILABLE	
205-80HR16 86-82	275-50VR16 158-83	See us for suspension conversions. We'll make your car perform.	
205-80HR16 86-82	275-50VR16 158-83		
205-80VR15 100-87			

Remember, NTW offers . . .

- Mounting and Balancing
- Specialists in Mag & Wire Wheels
- Specialists in High Performance Tires
- Full Manufacturer Guarantees
- Shocks and Accessories
- Only factory first tires, never blem

Tires by NTW National Tire Wholesale



Calendar

MARCH						
SUN	MON	TUE	WED	THUR	FRI	SAT
					1	2
3	4	5	6	7	8	9
10	11	12	13	14	15	16
17	18	19	20	21	22	23
24	25	26	27	28	29	30

APRIL						
SUN	MON	TUE	WED	THUR	FRI	SAT
	1	2	3	4	5	6
7	8	9	10	11	12	13
14	15	16	17	18	19	20
21	22	23	24	25	26	27
28	29	30				

March 24: Riesentöter Women's Tea & Talk.

March 27: Regular Meeting. Speaker - AL HOLBERT. NOTE - George Washington Lodge KING OF PRUSSIA (not Plymouth Meeting) 8:00p.m.

March 28: Driver Education. C.V.R. at Lime Rock.

April 13: Tech Session. Holbert's.

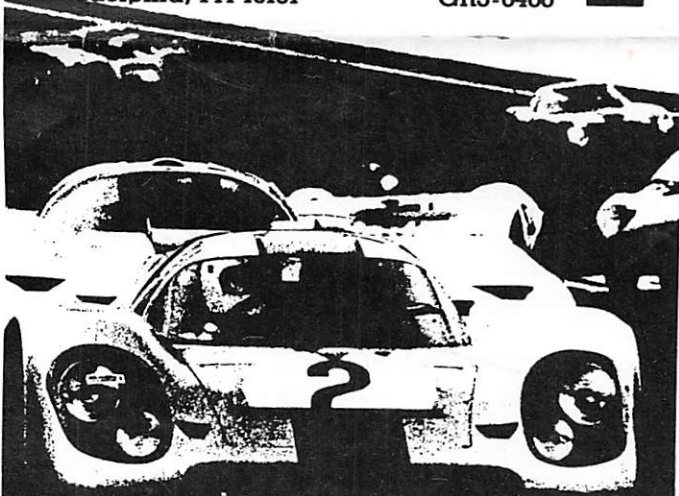
April 24: Wine Tasting Party.

April 27: Annacan '85.

EXCELLENCE ENDURES

Mike Tillson Motorcar Service and Sales
2097 North 63rd Street
Philadelphia, PA 19151

GR3-6400



TILLSON

PAUL K. JOHNSTON
325 WESTTOWN RD.
WEST CHESTER, PA.
19380 215-696-2164

- *Cosmetic reconstruction of Porsche and other fine German automobiles*
- *Custom Fabrication*
- *Celette Bench Unibody Repair*

JOHNSTON

ENTERPRISES

HECKMAN

709 BETHLEHEM PIKE
PHILADELPHIA, PA. 19118

FIRST CLASS

