

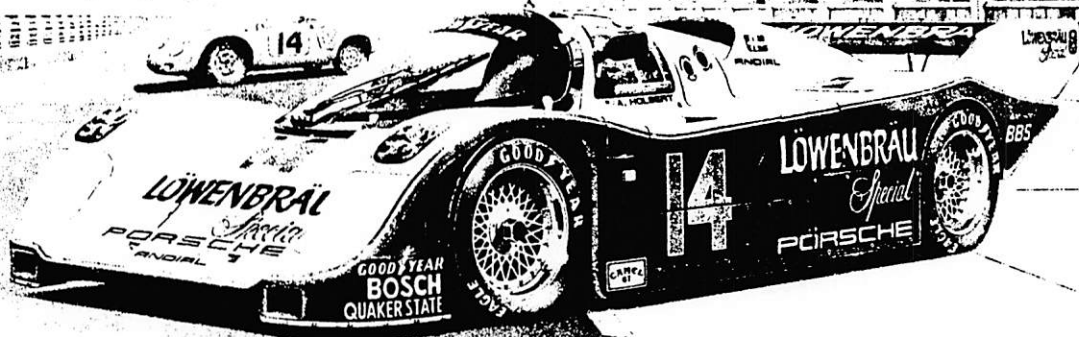
# *der Gasser*

MAY 2003

*Spring Rally.  
Day Added to June DE  
Getting to the Track ... and More.*



# HIGH PERFORMANCE



AT HOLBERTS IT'S WHAT YOU EXPECT AND WHAT WE DELIVER.  
EXCITING AUTOMOBILES AT THE BEST PRICES BACKED BY  
EXPERIENCED SERVICE, PARTS, AND AFTER-MARKET DEPARTMENTS.

IF IT'S THE PERFORMANCE EDGE YOU WANT, WE'LL SUPPLY YOU  
THE EDGE THAT MADE THE HOLBERT TEAM IMSA & LEMANS  
CHAMPION AGAIN IN 1987.

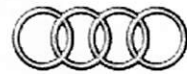
SO WHETHER IT'S ON THE TRACK OR ON THE ROAD . . . OR  
**SLIGHTLY OFF THE ROAD** COME TO HOLBERTS AND EXPERIENCE  
HIGH PERFORMANCE.



(215) 343-1600



(215) 343-2890



Audi

[www.holberts.com](http://www.holberts.com)

# HOLBERT'S

1607 Easton Rd.

Warrington, PA 18976

Porsche Fever is in full swing. Polish and detailing equipment are running off the shelves at most supply stores. Oil filters are tough to keep in stock. Gasoline prices are falling faster than Baghdad, allowing us to enjoy our toys without guilt.

This is the time we live for. Getting up at 5:00 on Sunday for a cup of coffee is sheer pleasure when we have sunny skies and a clean Porsche. During the winter I can't budget before 9:00 AM on this Day of Rest - but Porsche Season makes me feel alive and appreciative for all my good fortune.

The Exec of RTR has aimed that every Sunday you get up at this lovely hour you have a Porsche related activity to attend. If it is not an event sponsored by our Region, it is still within the parameter of a half a day drive, and driving, itself, should be our pleasure. We all get satisfaction from washing, polishing, and tinkering, but they are just a way to kill time so we can ultimately drive our cars.

On Sunday, June 8, please make the destination of that drive the Wine and Food Festival in Allentown we have advertised so much the last few months. Ken Souser and Brian Minkin have laid a lot on the line to offer a great event for RTR members and produce a fantastic gathering of RTR Porsches. It is for a good charity, honoring the mother of a longtime RTR member, and certainly deserves our support.

Speaking of Charity, it has amazed me how this topic has become popular since we established a charity committee three years ago (myself, Tom Zaffarano, and John Chatley). The committee hasn't done anything since our initial controversial proposal to initiate a planned program, but since then every Exec member with an event has designated at least one program with a charitable theme. The committee lies dormant, but it has fulfilled its purpose - to raise the social consciousness of us all.

I have done my best to keep politics out of the Exec the last two years. The key words have been fair, consistent, and respectful. It has worked masterfully - no prima donnas - just great programs for all. Contemporary events with respect for the rich RTR History, The Exec is good enough I don't have to do anything. All are committed, resourceful, and talented. A perfect position for an aging president.

Please support our events, use your Porsche, and take advantage of the finest programs in the country. Region of the Year, here we come!

# President's Message



This Issue

|                               |    |
|-------------------------------|----|
| CALENDAR OF EVENTS            | 3  |
| SPRING RALLY; STONE BRIDGE    | 4  |
| WEGMAN FESTIVAL; TECH SESSION | 5  |
| INTERESTING E-MAIL            | 7  |
| DRIVER ED - GETTING THERE     | 8  |
| TECH & DRIVER ED              | 9  |
| AUTOCROSS PUZZLE              | 10 |
| INSURANCE INFO                | 12 |
| DRIVER ED APPLICATION         | 13 |
| CLASSIFIEDS                   | 14 |

Cover Photo - 996 Carrera 4S from the Porsche web site.

May 2003

Photo by Doug Mahoney

# Calendar of Events

## MAY

- 10 Tech Session 1 - Holbert's Porsche, 1607 Easton Rd., Warrington, 9a.m.- 2 p.m.
- 11 Auto Cross Challenge from the Central PA Region - Hershey, PA (see pg 6)
- 16 - 18 Schattenbaum Region to host Zone 1 Concours & Rally in Princeton, NJ - see page
- 23 RTR Driver Ed, Advanced Groups Pocono
- 24 - 25 RTR Driver Ed, Pocono
- 28 Membership Meeting
- 31-June 1 Stone Bridge III

## JUNE

- 14 Tech Session 2- 9:00-3:00 Brandywine Porsche 4005 West Chester Pike, Newtown Square, PA
- 22 Picnic - Brandywine Park
- 25 Membership Meeting
- 27- 29 RTR Driver Ed, Jefferson Circuit

Friday Added !

## JULY

- 19 Tech Session 3 - To Be Announced
- 19 Dinner Cruise - Spirit of Philadelphia
- 30 Membership Meeting

## AUGUST

- 1 - 3 RTR Driver Ed, Watkins Glen
- 23 - 24 Club Race - Shenandoah
- 27 Membership Meeting

## SEPTEMBER

- 6 Chesapeake Bay City, MD Ramble
- 13 Tech Session 4 - 9:00-3:00 Don Rosen Porsche 1312 Ridge Pike, Conshohocken, PA
- 24 Membership Meeting
- 26 RTR Driver Ed, Advanced Groups - Pocono
- 27 - 28 RTR Driver Ed, Pocono North

## OCTOBER

- 4 Tech 5 - To Be Announced
- 13-14 Drivers Ed - Watkins Glen Charity Event
- 19 Autocross - Hershey [www.centralpaporsche.org](http://www.centralpaporsche.org)
- 29 Membership Meeting - Elections

## NOVEMBER

- 22 Longwood Garden Trip

## DECEMBER

- 13 Holiday Party - Cock 'n Bull in Lahaska

See RTR Driver Ed Application on page 13 and [www.rtr-pca.org](http://www.rtr-pca.org) for the latest updates.



**May's Membership Meeting - Mike Tilson's Motor Car Service**

2097 N 63rd St.  
Philadelphia  
215-473-6400

**May 28**

7:30 Social  
8:00 Meeting

**Social Events**

June 22 - Picnic - Brandywine Park, Pacopson, PA  
 July 19 - Dinner Cruise - 'Sprit of Philadelphia' - Penn's Landing, Pier 3 - 8:00 p.m. \$64 ea.  
 September 6 - Ramble - Chesapeake Bay City, MD  
 November 22 - Longwood Garden Trip  
 December 13 - Holiday Party - Cock 'n Bull, Peddlers' Village, Lahaska, PA \$50 plus cash bar

**More Details to Follow**



**CFS EQUITY SERVICES, INC.**  
PA Licensed Mortgage Brokers

**William A. Frey, Jr.**  
Vice President  
[wfrey10@comcast.net](mailto:wfrey10@comcast.net)

Office: 215-297-9745  
 Fax: 215-297-8866  
 Mobile: 267-337-0488

Post Office Box 291  
Solebury, PA 18963

Thank you CJ's Tire and Automotive Service: Kevin Hyatt, Ted Dorazio and Greg Mynaugh for hosting our meeting and for that special treat....

Special thanks to PIRELLI's Jack Diamio and Doug Matthews for their informative introduction of the new P Zero Corsa.

May's meeting will be held at Mike Tillson Motor Car Service. By popular request we will again have a show and tell slide presentation on the 2002 Mille Miglia Vintage Rally that was attended by our own Craig Rosenfeld, Bill O'Connell, Mike & Sue Tillson.

The meeting will be held Wednesday, May 28, with Social at 7:30, Membership meeting at 8:00.

NOTE: Additional parking is available two buildings down from Mike's place on the same side of the street in the parking lot of the old ACME.

The June meeting will be held at Brandywine Porsche, Newtown Square, PA.



Registration for Watkins Glen Drivers Education Track Event will open at this meeting.

Applications will be accepted from 7:00 PM to 8:00 PM ONLY.

Due to the popularity of this event, it will sell out prior TO 8:00 - GET THERE EARLY.

**Other Stuff**

I will again be a driver for the Porsche Drive for Hope. This year it is called the 2003 Cayenne Crossing Drive for Hope see [www.driveforhope.org/index.php](http://www.driveforhope.org/index.php). By the time most of you get to read this message I will have driven in one of three Cayenne Turbo's over 2500 miles from Phoenix AZ to Atlanta GA. My 72-hour drive will begin at 10 AM on May 10th and end on the 13th. Please check out the web site. Feel free to donate to this worthy cause and maybe bid on one of the great auction items.



**My ride in Black**

Dyno Day was good to me—not only did I finally get to test my AWD C4 (most dynos are for 2 wheel drive cars) but I actually got to watch Kenny McNeil of AWE build and

install 10 additional horsepower in my car.... More later.

Goodie Store Update: Lots of new stuff. Check it out at the next meeting . . .



**Golf Outing**

Here is an idea for a social event. I would like to organize a golf outing, I need about thirty golfers minimum to make it a great day. Please send me feedback to let me know how many of you would be interested. Answers by July 1 would be appreciated so I can plan ahead.

Francinebodo@aol.com

Francine, Social Chair



**THE HIRSHORN COMPANY**  
INSURORS

**JOHN D. HECKMAN, AAI**  
ASSISTANT VICE PRESIDENT OF PERSONAL LINES

jheckman@hirshorn.com

14 East Highland Avenue  
Philadelphia, Pennsylvania 19118

(215) 242-8200 • (800) 242-8221 • fax (215) 247-6366

# Rally

## SPRING RALLY IS HERE!

Well folks, it's that time of year again when we all get our cars out of hibernation. Some of you may have driven your cars year round (like Vicky & Bill) but nevertheless, it's time to get out in the sun and enjoy a drive in the "Sunday" cars. I

THIS YEAR,  
THERE WILL  
BE A NEW  
VARIABLE  
THROWN IN  
TO SPICE  
THINGS UP  
A BIT.

apologize for the delay in any sort of announcement about the rally and/or schedule. Due to the erratic and constantly changing weather patterns as

well as the unusually prolonged winter, I have delayed the timing of the rally so that we have more of an opportunity to bask in the sun.

The pseudo "Spring Rally" will be held on June 1<sup>st</sup> with a rain date of June 8<sup>th</sup>. This Rally will be what I called an "A to B" rally last year. The Rally will begin at:  
Lavanda Salon & Spa 3309 Dekalb Pike, Norristown, PA 19401.

This address is a new high end hair salon (instructors from Vidal Sassoon) that a friend of mine opened just a few months ago. Lavanda has been courteous enough to donate gift certificates for everyone who attends the event for a free hair cut, style, and consul-

tation. Yes, whoever shows up gets one and yes, this is a big deal since some world renown stylists will be doing the work - au gratis. The salon is on the corner of Dekalb Pike and

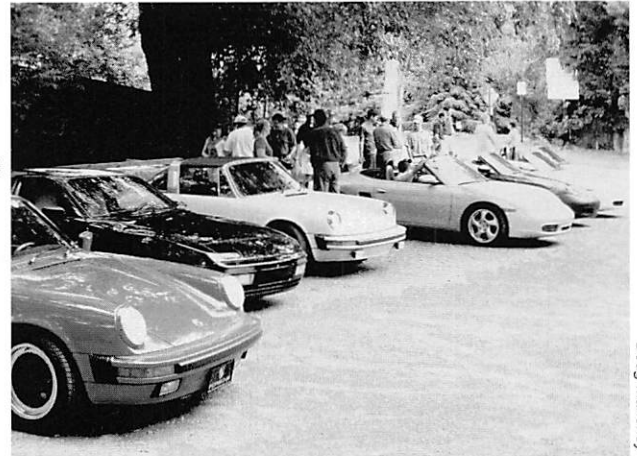
Townshipline Road on the border of Norristown and Blue Bell (Across the Street from the CVS). The drivers' meeting will be at 10:30 AM with the first car off at 11:00. I will have coffee and rest rooms available to start the event. Check out:

[www.lavandasalon.com](http://www.lavandasalon.com)

This year, there will be a new variable thrown in to spice things up a bit. It has become my understanding that PA auto insurance prohibits any engagement in any timed event. In other words, you will not have coverage if you are in any timed event and have a fender bender or should something unforeseen occur. Keeping that in mind, I am forced to delineate from traditional TSD events in the effort to emphasize safety. Let's just say that there is an "air of warning" from the folks above. This causes creativity to replace the clock. I intend to make this year's events as interesting and as un-orthodoxed as they have been in the past years (yes, Craig & Bill have slapped my wrists a few times).

The Summer Rally will be held

on July 13<sup>th</sup> with a rain date of July 20<sup>th</sup>. The Fall Rally will be held on September 7<sup>th</sup> with a rain date of September 14<sup>th</sup>. Keep an eye out in the next coming issues of Der



Doug Mathoney

Gasser or check the club web site [www.rtr-pca.org](http://www.rtr-pca.org) for up to date information. If anyone has any questions, please feel free to contact me at (610) 279-1312. Thanks and I'll see you soon.

-Steven Choi



### A Note From The Tripmeister:

There are still some openings for the Stone Bridge III, May 31 - June 1, our Pocono Mountains excursion. The trip, departing from Allentown, involves a lovely drive on country mountain roads with a lunch stop enroute. We arrive for dinner and the night at the Stone Bridge Inn, Uniondale, PA. We are limited to thirteen participants and the cost is \$180 per couple which includes dinner, lodging and a continental breakfast.

I am also seeking significant Porsches for inclusion in the History of Porsche display at the Food and Wine Festival June 6, 7, 8. The cars will be displayed under a tent and protected with 24 hour security. We need twenty cars and there will be a People's Choice trophy awarded.

For further information contact:

Ken Souser  
5696 Merion Lane  
Macungie, Pennsylvania 18062

Home: 610-966-4391  
Cell: 610-533-6123

E-mail: [KenSouser@AOL.com](mailto:KenSouser@AOL.com)



## *RennStreet Communications, Inc.*

**Frank Donato**  
CEO/Founder

Audio/Web  
Conferencing Solutions.  
Communications Consulting.  
Carrier Brokerage Services -  
Voice, Data, Internet, VPN.  
[www.rennstreet.com](http://www.rennstreet.com)

307 Jefferson Drive  
Malvern, PA. 19355  
Phone: (610)-993-8792  
Wireless: (484)-467-1323  
[Frankdonato@rennstreet.com](mailto:Frankdonato@rennstreet.com)



Pre-Registration Form

**THE LARGEST RTR GATHERING EVER**

PORSCHE CAR SHOW  
PEOPLES CHOICE CONCOURS

Sunday June 8<sup>th</sup>, 2003 - 10AM  
Wegmans Great Taste Culinary Festival  
Cedar Beach Park, Allentown, PA

Mail Your Completed Pre-Registration to:

**Brian S. Minkin**  
**120 S. Bishop Ave.**  
**Springfield, Pa 19064**

Member Name : \_\_\_\_\_

Telephone Number : \_\_\_\_\_ Email : \_\_\_\_\_

Car Info: Model : \_\_\_\_\_ Year : \_\_\_\_\_ Color : \_\_\_\_\_

Number Of People Attending With You: \_\_\_\_\_

Entry Fee is \$25/car and includes food & wine tasting privileges for the driver at the festival. Entry Fee will be collected at the event. Additional food & wine tasting privileges for others in your party can be purchased for \$25 per person if desired the day of the event. (Gate Entry Fee is normally \$36 )

Number of additional food and wine tasting privileges desired: \_\_\_\_\_

Pre-Registration enters you in a drawing for a complete Zymol Car Care Kit. It also helps us guess how many cars will be attending so we can have adequate space allocated at the event. Thanks for Pre-Registering.

**Tech Session at Brandywine Porsche**  
**Saturday, June 14, 2003**

Brandywine Porsche will be sponsoring our Track Tech Session on June 14th. This will be our first tech event at Brandywine Porsche. Don't forget to thank them for supporting Riesentöter. A fee of (\$20/hr.) will be collected for use of the lift. Part of the lift fees from this years tech sessions will benefit charity. Coffee and doughnuts/bagels/ muffins will be available in the morning and we will order pizza for lunch. Be sure to bring the tools and parts you need to complete any minor maintenance.

These are tech sessions are scheduled to coincide with a track event but by no means are they limited to track participants. Anyone in the Club can bring their Porsche for minor maintenance. The shop will have their

**Brandywine Porsche**  
**4005 West Chester Pike**  
**Newtown Square, PA**

9am - 2pm

Directions - 4 miles west of  
Rt. 476 (Blue Route) on  
Rt. 3 (West Chester Pk.)

**VISION** **PORSCHE**  
**Audi**  
**VOLKSWAGEN**

1211 LANCASTER AVE.  
P.O. BOX 306  
READING, PA 19607  
(610) 777-6501  
(610) 775-2794 FAX

**R. CRAIG ROSENFELD**  
*Dealer Principal*

mechanics on hand to answer any questions and there are usually plenty of club people around with lots of experience. It is a great time to meet other people in the club. You can even drop by just to see what is going on and learn from watching other people. You can call or email me if you have any questions. See you there!

Ed Kovalevich & Dave Ehm,  
Riesentöter Track Safety

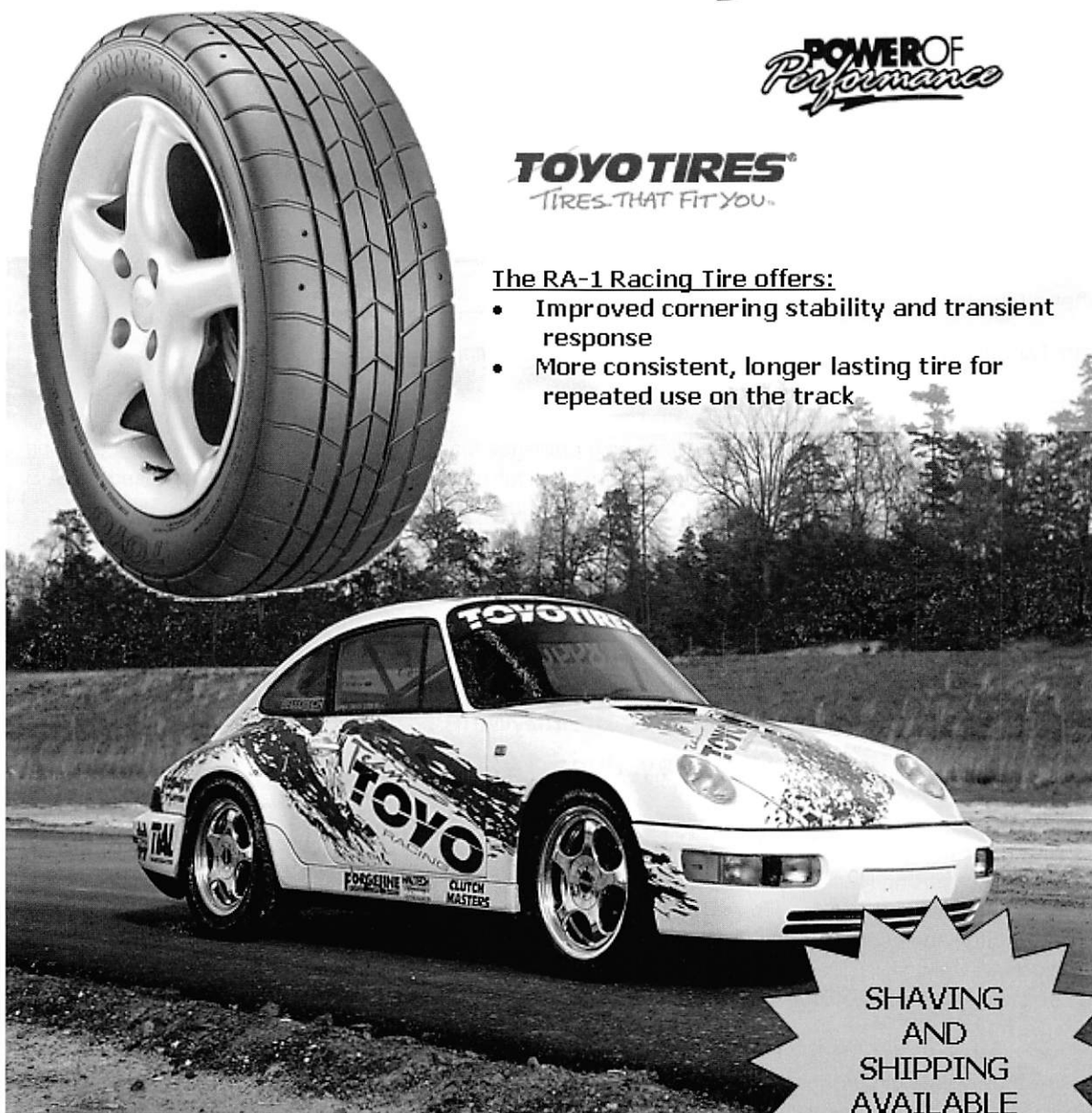


**POWER OF**  
*Performance*

**TOYO TIRES®**  
TIRES THAT FIT YOU.

The RA-1 Racing Tire offers:

- Improved cornering stability and transient response
- More consistent, longer lasting tire for repeated use on the track



CJ's offers:

- State of the art mounting & balancing equipment
- Hunter Alignment Equipment—can adjust to your specifications

**Berks County:** Birdsboro 610-582-4266 • West Lawn 610-670-5922 • Leesport 610-926-0400

**Montgomery/Chester Counties:** Kimberton 610-933-5984 • Limerick 610-409-0400

**Lancaster County:** New Holland 717-354-3193 • Lititz 717-625-3700

*Or request information on line at [www.cjtire.com](http://www.cjtire.com).*



149 Old Lancaster Road  
Devon, PA 19333  
(610) 964-0477

Sales  
Service  
Repairs  
Parts



## Wanted

Editor for this mag. Some knowledge of software an advantage and the desire to take der Gasser to the next level a must. Contact anyone on The Exec [page 16].



## A Random E-Mail of Interest

As you may be aware, the National Motorists Association periodically sends out legislative alerts related to driving and automotive subjects. Each of these alerts is also posted on our web site at [www.motorists.org](http://www.motorists.org). You can find them in the "Motorists' News section."

If you would like to receive e-mail alerts directly, you can sign up on our web site [the same section containing the Legislative Alerts]. There is no charge for this service.

If you become aware of state legislation, or even a local ordinance, that affects the interests and rights of motorists, and you would like to share this information with others, please contact me via e-mail to arrange distribution. At a minimum, we can get the word out to NMA members in the affected region.

Thanks for your interest and consideration.

Eric Skrum  
Communications Director

Celebrating 20 years of protecting your rights!  
National Motorists Association 608/849-6000

[nma@motorists.org](mailto:nma@motorists.org) [www.motorists.org](http://www.motorists.org)  
Advocating, Protecting, and Representing  
the Rights of North American Motorists



Doug Mahoney

## BEST PRICES ANYWHERE!

Late Model, Low Mileage  
**PORSCHE**  
Other Fine Motorcars  
(484) 576-3805  
[www.aspenauto.com](http://www.aspenauto.com)  
Aspen Automotive Group  
Brian Hankey

## Track Note

Be sure to note that the  
Summit/Jefferson  
Circuit weekend is a  
three day event, June 27  
through the 29th.



by Christopher Mahalick, RTR

So it's your first track event. You feel prepared. You've downloaded the RTR Driver's Ed manual and read it cover to cover. You are positive you packed everything you will need for the weekend. Yet you still have questions. And understandably so. While a lot has been said about what to do once you arrive at the track, very little has been said regarding getting to the event. So, while by no means accurate, I will try to fill you in.

Let's start with getting to the track. There are two mindsets, drive or tow. Both methods have their advantages. Towing the car allows you to relax in the living room like environment of the tow vehicle. For these folks the drive to the track is made pretty predictable by the fact that you can only go so fast and maneuverability is at a premium. May I suggest a DVD player and a ton of patience.

Personally, I like to drive my car to the track. First and foremost, I am too cheap to buy a tow vehicle. And then there is always the problem of what to do with the trailer for the 255 days of the year when it is not in use. Nothing says "class" like an empty trailer shoehorned onto a half-acre lot. It's kind of like when you drive by a small home with a huge yacht on a trailer in the front yard. Don't you think they should have taken the yacht money and bought a bigger home? Like who are they trying to impress? The home is usually dwarfed by the boat, which sees water maybe three times a year, making the scene that much more ironic.....Oh, weren't we talking about driving to the track?

Basically, the drives to the tracks we generally visit for RTR DE events fall into two categories: short drive and long drive. Each requires a unique plan of attack.

Pocono International is less than two hours away, making it a relatively short drive. It is a furious, buzzy trip up the PA Turnpike's Northeast extension. The problem with the Northeast Extension is that it serves to funnel the entire populations of southeastern Pennsylvania and lower Jersey to the Pocono Mountains and beyond. On holiday weekends this roadway is seriously overcrowded with impatient, poorly trained drivers. The fact that this must be a major eastern trade route (although never taught in school) assures plenty of truck traffic as well. Never a dull moment.

It's best to look at this run as a sprint, rather than an endurance event. You'll want to be good and angry for this one. A minimum of three cups of strong coffee and thoughts of the school yard bullies of your youth should get you feeling good and aggressive. For music, you'll need a good supply of eighties hardcore played loudly. Anything by *The Dead Kennedys*, *Black Flag*, *Husker Du*, or the *Avengers* will set the tone by mimicking the chaos around you. Traffic on this insidious stretch of road will scream along at speeds of up to eighty miles per hour, punctuated by milliseconds of pure terror when the long line of tailgating vehicles in front of you suddenly decide to collectively slam on their brakes. It was on this road that I actually saw an

## Driver Ed: Getting

eighteen-wheeler lock up the ilously swing from lane to lane alert to survive the carnage, tioned caffeine coupled with a a very rewarding drive in the When done right, you should real life video game. Plus, you for a drink or two to "get rela

If the Pocono drive is cons sify the drives to Summit Poi the travel equivalent of the "2 these trips could take as lon patience are the keys for a su relaxed, no, make that semi- your sanity intact. And I'm s "relaxation technique". You' road for hours with nothing r billboards for entertainment. have time to experience the Kraftwerk's *Autobahn*. Other Sisters of Mercy, *Floodland* Grateful Dead bootlegs from t taining the words "Goa Tranc low, doesn't it? Well it is, s eighteen-wheelers.

While most folks view th with strong family values (as owners are), I see just the op disgruntled family man with weight kids, and a half-assed passed over for promotions o to spend the rest of his worki agement position. Remem Douglas portrayed in the mo think is behind the wheel. Th time, so it is essential to avoi without incident. No sense sharing the road.

Now eighteen-wheelers an as fast as possible in order amazes me when I see folks i side huge trucks. What are th surmise is that they are in cheap to employ the service Thelma will take some explo I'll be a free man at last". W drivers piloting these huge hours without sleep, coupled shenanigans" combine to cr driver. With that in mind, you as quickly as possible. This is verable car is an advantage o

## There . . . And More

wheels, causing the trailer to per-  
e. You will need to be completely  
hopefully fueled by the aforemen-  
strong survival instinct. All in all,  
end, provided it was incident free.  
feel like you just stepped out of a  
now have an excuse to hit the bar  
ked”.

idered a sprint, we'll have to clas-  
t/Jefferson and Watkins Glen as  
4 Hours at Nelson Ledges”. Since  
g as four hours, consistency and  
successful run. It is essential to be  
omatose, in order to arrive with  
ure each one of us has a proven  
I be driving on long stretches of  
more than trees, farms, and tacky  
As far as music goes, you will now  
full twenty-two minute version of  
musical suggestions include: The  
Bauhaus' *Bella Lugosi's Dead*,  
he late seventies, and any CD con-  
e” in the title. Sounds pretty mel-  
ve for two things: Minivans and

e minivan driver as a solid citizen  
am positive that any RTR minivan  
posite. To my mind, the driver is a  
a skaggy wife, two-point-five over-  
home in the suburbs. He has been  
n the job front and is now destined  
ng life in a corporate, middle man-  
er the character that Michael  
ie “Falling Down”? That's what I  
s “powder keg” could blow at any  
eye contact and just cruise on by  
n taking on small arms fire over

e just big. I try to get on by them  
to avoid contact (and death!). It  
n the passing lane lingering along-  
ey thinking? The only thing I could  
unhappy marriages and are too  
s of a hit man. “Hmmm, maybe  
ing tire shrapnel to the head and  
whatever. And how safe are those  
igs? I'm sure that seventy-two  
with liberal doses of “truck-stop  
eate a really safe, conscientious  
will want to get away from trucks  
when driving a good, fast, maneu-  
n long road trips.

So other than that, as long as you don't fall asleep behind the  
wheel (much more a factor on the drive home), your trip should be  
without incident, and you will be ready for some fun.

And just one final warning – While it is really fun to travel with  
a bunch of cars in a loose recreation of “The Cannonball Rally”, the  
flip side is not as much fun. I remember a few years back when a  
“friend” and “another friend” had just departed from lunch and had  
the brilliant idea to see who's car was faster. One “friend” was  
driving a Carrera, the other, a BMW M3. As it was told to me, the  
Porsche was gaining fast on the M3 at about 100MPH. And at  
that exact moment both of our “friends” spotted a Pennsylvania  
State Trooper aiming a radar gun at them. And after twenty-five  
hundred dollars in legal fees and four hundred dollars in fines, our  
friends still had six points each on their drivers' licenses.

So the moral of the story is to save the racing for the track.  
Which is why Drivers Ed is so much fun. And much more fun when  
you and your car and your license make it to the track in one piece.  
Enjoy the drive.



# WHEN ONLY THE BEST FOR YOUR CAR WILL DO!

Complete Alignment Center Including: Hunter Alignment and Goodyear Certified Run Flat Tire Equipment

ASE Certified Technicians

Complete Suspension Upgrades: Bilstein, Koni, JRZ

Mobil Oil, RedLine Racing Oils

B&B Exhaust Products

Engine Upgrades

Transmission Upgrades

Brembo, Pagid, and Hawk Brakes

Authorized Tire Rack Install Center

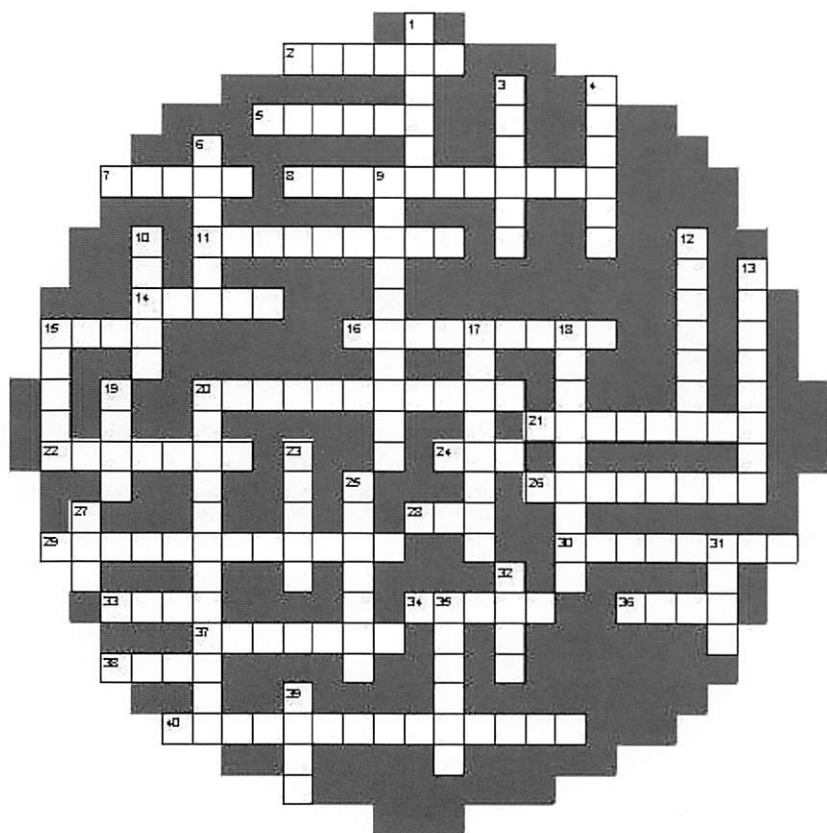
The "Leader" in Porsche Maintenance and High Performance Modifications.  
25% OFF towards your tech inspections with mention of this add.

**PERFORMANCE  
AUTOMOTIVE, INC.**

3239 Phoenixville Pike, Bldg. 1 suite 1  
Malvern, PA 19355  
(610) 695-9545

## Autocross Puzzle

# Autocross



### Across

- 2. Zig Zag Course
- 5. Liability Dispensation
- 7. AX Commodity
- 8. German for Giant Killer
- 11. Timed Closed Course Sport
- 14. Car with Original Equipment
- 15. AX Opponent
- 16. Maintain Revs or Torque
- 20. Other Drivers in Class
- 21. Body Restraint
- 22. Rotate on Car Axis
- 24. Fastest Time of Day
- 26. Rotation on Wrong Axis
- 28. National Porsche Organization
- 29. Corner Worker Tool
- 30. Figure Out Course
- 33. Another Name for Autocross
- 34. Used to Mark Cone Position
- 36. Fastest Route Through Course
- 37. Signal to Stop
- 38. Pre-Run Ritual
- 40. Listen and Learn

### Down

- 1. Pylons in a Parking Lot
- 3. Orange Traffic Markers
- 4. Non-competitive Runs
- 6. Competition Seat
- 9. Cheap Racing Numbers
- 10. S-shaped Bends
- 12. Car of Choice
- 13. Sign In
- 15. Pylons on the Course
- 17. Porsche
- 18. Competition Harness
- 19. Staging Area
- 20. Safety Person, Cone Reporter
- 23. Helmet Standard
- 25. Round n' Round
- 27. Light Weight Race Wheels
- 31. Center Point of Turn
- 32. Wheels Turned, Car Doesn't
- 35. Head Safety Equipment
- 39. Safety Inspection

Answers on page 17.

# **Quality, High Performance Automotive Services**

**Complete chassis and component design, machining, fabrication, construction or restoration. Complete race car set-up, testing and tuning.**

**From working on a '33 Ford Street Rod to restoring a 962 GTP Porsche, RACE READY can help you with your automotive needs at a shop rate that will let you enjoy your car.**

**We have the staff and equipment to handle any of your needs.**

**NOW in 20,000 sq. foot building**

## ***Fabrication***

- ◆ Tube Bending
- ◆ Sheet Metal
- ◆ Billet Aluminum
- ◆ Suspension Components
- ◆ Complete Chassis
- ◆ Roll Cages

## ***Welding***

- ◆ TIG Welding
- ◆ MIG Welding

## ***Machining***

- ◆ Milling
- ◆ Turning

## ***Body Work***

- ◆ Fiberglass
- ◆ Carbon Fiber
- ◆ Sheet Metal
- ◆ Leading
- ◆ Painting

## ***Suspension***

- ◆ Complete Car Setup
- ◆ Suspension Tuning
- ◆ Corner Weighting
- ◆ Springs
- ◆ Sway Bars
- ◆ Shocks
- ◆ Crack Testing
- ◆ Custom Components

***Professional Quality Craftsmanship  
Built on Service, Reputation and Trust***



*For more information, visit our web site:*

***www.racetec.net***

**or call 610-631-7003 or fax to 610-631-5429**

2420 Boulevard of the Generals, Norristown, PA 19403

*This was an e-mail sent to me that seems a bit like an advertisement but I believe it is of such value to the members that I have decided to reprint it here.*  
Ed.

**Driver's Ed and Personal Auto Insurance...**

**Know the facts before you get on-track**

by Terry Kohl

Driver's Ed participants - have you ever had a conversation with your insurance agent along the lines of, "What can I expect from my auto insurer in the event of on-track damage or loss?"

Some people are not going to worry about this issue unless and until they experience an on-track loss - and then they will either get

MOST PCA MEMBERS BELIEVE, "DRIVER'S ED IS NOT RACING, SO COVERAGE SHOULD NOT BE EXCLUDED." BUT THE INSURANCE COMPANY FACING A \$65,000 LOSS ON A RUINED '92 PORSCHE 911 REVIEWS THE CLAIM AND SEES FLAGS, RACING HARNESSSES, HELMETS AND HIGH SPEEDS.

their claim paid by their personal auto insurer, or prepare to do battle with it. The problem is, Driver's Ed is not specifically addressed in most standard auto insurance policies, so it's hard to know how your insurer will react - unless you have a conversation with a company representative beforehand - or submit a claim.

Most PCA members believe, "Driver's Ed is not racing, so coverage should not be excluded." But the insurance company facing a

\$65,000 loss on a ruined '92 Porsche 911 reviews the claim and sees flags, racing harnessses, helmets and high speeds. While Driver's Ed may not technically be defined as racing, there is a "gray area" here and policy language is vague, so the company may consider declining coverage, especially on a claim of severity. In fact, some insurers (e.g., USAA in Florida) are "getting wise" to the Driver's Ed exposure and are endorsing their auto policies to specifically exclude coverage for D.E.

Find out where your company stands on this issue. Have a conversation with your agent and if he or she assures you that loss or damage to your vehicle during a D.E. event is covered, ask your agent to get it in writing (preferably on Company letterhead). Also ask how an on-track loss may impact your family auto policy in terms of a rate

increase or possible non-renewal.

If you are interested in alternative coverage, there is an insurance provider in Cherry Hill, NJ called American Collectors Insurance that offers Driver's Education Auto Physical Damage coverage. The policy is currently available in eleven states: CA, CT, FL, GA, IL, MD, MI, MN, NC, OH and PA. Coverage is strictly for vehicles used in Driver's Education events and covers on-track damage and loss. Coverage is also provided for the vehicle while in storage and in trailered transit to and from Driver's Ed events.

No liability coverage is available through the D.E. program. If your vehicle is registered, you must have at least enough liability insurance with another carrier to meet your state's financial responsibility requirements.

That being said, there are advantages to the D.E. physical

*continued on page 16*

**PORSCHE AUTHORIZED SERVICE**

**MID-ATLANTIC REGION - PA, NJ, DE**

**DONT LET YOUR "RAG TOP" LOOK IT!**



**Rebuilt Targa's Rear Windows  
Convertible Tops Restortations**

**Willow Grove Auto Top**

*Custom Auto Upholstery*

43 N. York Rd.

Willow Grove, PA 19090

**(215) 659-3276**

# Riesentöter PCA Driver Education 2003 Application

| <u>EVENT</u>          | <u>DATE</u>    | <u>FEES - Student</u> | <u>Inst</u> | <u>Open Date</u> |
|-----------------------|----------------|-----------------------|-------------|------------------|
| * Pocono East Course  | May 23         | \$90                  | \$90        | March 26         |
| Pocono North Course   | May 24, 25     | \$180                 | \$90        | March 26         |
| Summit Point          | June 27        | \$90                  | \$45        | April 30         |
| Jefferson Circuit     | June 28, 29    | \$180                 | \$90        | April 30         |
| ** Watkins Glen       | August 1, 2, 3 | \$280                 | \$140       | May 28           |
| *** Shenandoah        | August 23, 24  | \$180                 | \$180       | June 25          |
| * Pocono South Course | Sept 26        | \$90                  | \$90        | July 30          |
| Pocono North Course   | Sept 27, 28    | \$180                 | \$90        | July 30          |
| Watkins Glen - MAW    | Oct 13, 14     | \$220                 | \$110       | August 27        |

**Please circle the event you wish to enter.**

A separate form is required for each event. - A separate check is required for each event and application.

- \* The Pocono East and South course events are for white run group and above.
- \*\* Registration to the Glen event includes dinner on Saturday night; however seating is limited to 160. Extra dinner tickets are available at \$40 each. The first 160 requests will get seating.
- \*\*\* The Shenandoah event is a club race with only one DE group open to red or black run groups.

- REQUIREMENTS:** You must have a valid driver's license,  
Be at least 18 years of age,  
Have a Snell 95 or Snell 2000 helmet.
- ENTRY DATE:** If you register within 14 days of an event, please add \$20 for late processing.
- SEND TO:** **Chris Mahalick, 510 Fletcher Road, Wayne, PA. 19087. 610-909-7968**
- REFUNDS:** Refundable if **Written Notification** is received two weeks prior to the event.
- TECH INSPECTION:** Your car must be inspected, no more than two weeks prior to the event, by an approved tech inspection facility.

***Riesentöter reserves the right to refuse any application***

Please print

Name \_\_\_\_\_  
 Street \_\_\_\_\_  
 City \_\_\_\_\_ State \_\_\_\_\_ Zip \_\_\_\_\_  
 Home Phone (\_\_\_\_) \_\_\_\_\_ Work Phone (\_\_\_\_) \_\_\_\_\_  
 PCA Member # \_\_\_\_\_  
 Porsche Model and year \_\_\_\_\_ Color \_\_\_\_\_  
 E-Mail Address \_\_\_\_\_

List the number of days you have done at the following tracks:

Pocono \_\_\_\_\_ Watkins Glen \_\_\_\_\_  
 Jefferson Circuit \_\_\_\_\_ Summit Point \_\_\_\_\_  
 Other \_\_\_\_\_

What was the last run group you ran in at a Riesentöter event? \_\_\_\_\_  
 Riesentöter issued car number \_\_\_\_\_

I certify that I have no physical or mental disorders which might affect my ability to safely participate in this event.

Signature \_\_\_\_\_

**Your registration will not be processed without payment enclosed.**

**EMERGENCY CONTACT INFORMATION**

Contact \_\_\_\_\_ Relationship \_\_\_\_\_  
 Address \_\_\_\_\_  
 Day Phone # \_\_\_\_\_ - \_\_\_\_\_ - \_\_\_\_\_ Evening Phone # \_\_\_\_\_ - \_\_\_\_\_ - \_\_\_\_\_  
 Family physician \_\_\_\_\_  
 Day Phone # \_\_\_\_\_ - \_\_\_\_\_ - \_\_\_\_\_ Evening Phone # \_\_\_\_\_ - \_\_\_\_\_ - \_\_\_\_\_

# der Gasser's CLASSIFIEDS

## PORSCHEs FOR SALE

**'64 356 C Coupe**, #217424 with SC engine #820119. Original, good condition light brown interior with Brown leatherette, and #6411 exterior paint (Togo Brown), both per Cert. of Authenticity. Dash-mounted VDO oil pressure gauge (just to right of clock), camber compensator, 8,000 RPM tach, chrome wheels, perfect bumpers. Straight and rust-free. \$22,750. Doug FitzSimons, Elverson, PA. 610-469-1029 after 7pm.

**72 911 Zermont silver**, 5 speed 2.7 engine and original 2.4 is available. Lots of new parts have been installed including batteries, rotors,



calipers, carpets, ect. ect. same owner since 1976. classic tags. 97,000 miles on car, 41,000 on engine. \$11,000. barbara weaver 610-469-6331 or barbmgr@aol.com

**73 911 PCA GT3-R Race Car**, Probuilt by Kelly Moss, the best of everything. Fresh 3.4 Motec, 2,040 lbs. Penskes, BBS, Racer's Group, Fabcar, etc. 993 RSR body, full set-up and support. Over \$250,000 invested. Bought GT3 Cup Car. Will sell car w/partial spares for \$74,500 or \$80,000 w/new backup gearbox. Tim Holt, Holtmotorsports.com 610-692-7100

**76 911S**, 53K All original car, CIS, upgraded tensioners, coil and alternator, new injectors. Trans and shifter perfect. Engine seized after



rebuild but ran very strong with some leaks and smoke before that. All it needs is a good long block to be nice again. Body and paint very good no rust, garaged. Dash and gauges perfect, no headliner or rugs, seats from another car in poor shape. \$7900 mpcm@erols.com 6102789447

**85 911 Carrera**. White w/black leather. Excellent Condition! 6 way power seats, power windows + locks, sunroof, alarm, headlight washers, cruise control, good a/c, Momo Course steering wheel, Autothority chip and Borla exhaust, Aiwa w/ MBQuartz, strong



engine: dyno at 210 hp at wheels, Centerforce clutch, most records, factory spoiler + tail, H4 headlights, lowered to Euro specs. Extras available like bra, cover, wheels, etc. 113K miles \$16,500 obo. Just bought a C2. Mike (718) 721-6182 or kingsvil@erols.com

**86 928S coupe**, WPOJB0928GS862707 Red/blanc leather, auto, ABS, A/C, sun roof, Blaupunkt AM/FM Cassette, 43K orig miles. New tires, battery, timing belt, water pump, A/C, cover. No snow or smoke, Garage kept. All service records since new. Very exceptional car. Must see to appreciate. Pictures available. Runs & looks like new. \$20,000. Mr. Vassil, 93 Dispatch Dr., Washington Crossing, Pa 215-321-1324

**87 911 Carrera Coupe**, 50,500 miles, black /black leather, front spoiler, whale tail, new Alpine in dash CD & 6 disc changer w/amp,



pwr: seats, side mirrors, locks & windows, sunroof, AC, original window sticker \$44,000+ when new - now \$26,500. Garaged and fully serviced with records. Contact: John Panizza, 468 Wharton Road, Exton, PA 19341; 610 363-6003 x125, 610 563-0209 or jpanizza@gentera.net.

**1987 Carrera Turbo Coupe**. 43,232 miles. Always garaged. Excellent interior and exterior condition. Sun roof. Guards Red. Black leather trim interior. Integrated radar. Stereo upgrades. Tinted windows. PCA race-ready but never raced. Lowered and corner balanced. Full suspension upgrades--torsion bars, Weltmeister adjustable front and rear sway bars, Bilsteins, front and rear anti-roll bars. Dyno-tested 246hp at rear wheels. Prepared and maintained by Euro Motorworks in Indianapolis, and Performance Automotive in Malvern. \$40,000. 610-212-2164/610-415-9278.

**93 RS America**, WPOAB296XPS418047, Red/Blk. 18K miles, 2nd owner, all options, ltd spli, A/C, sunrf, radio. New tires, fresh Mobil One. Perfect! \$42,000 Fred Brubeker, 610-434-8778(d), 610-797-9298 (e)

**94 968 Coupe**, Black/Black, orig. owner, mint cond., never seen snow, garage kept, M030 susp. upgrade with 17" wheels, lim. slip. diff., 19,000 mi., Asking \$28,000, Ben Deratzou, 5270 Bowood St., Center Valley, PA 18034. 610-282-4169.

**99 Carrera 996**, Street legal racecar, 19k Miles on Race PCA Stock Class C Log Book, s/n WPOAA2994XS623392 This racecar has NEVER struck a stationary object. Red w/black interior, GT-3 Aerokit nose, skirts, Banana Wing, rear bumper, front & rear tow hooks, sunrf, exterior kill switch, Gambella headlight trim, clear 3M poly windshield, nose and headlight protector. Carbon fiber interior trim, CD Radio & all speakers remain, back seat removed, full cage, through dash A/C vents, A/C is operational, removable cage side bars. Team Tech harnesses, + OEM seatelts, OMP racing seats, Momo racing steering wheel, wiring for Motorola racing radios w/PTT switch & helmet kit. Driver Cool Vest w/ice chest, DataCam data acquisition on video recorder, eng temp, oil pres, O2 sensor, lap counter, accel/decel g, left/right g, mph, rpm, brake on/off, throttle %, lap time. Spot-on weight requirement for car in class. Motorsport engine oiling kit w/GT-3 third radiator, racing limited slip transaxle, GT-3 suspension arms & bushings, front tower brace, ProTrac triple adjustable gas canister shocks. Lowered w/H&R racing springs, BBS competition wheels Hoosier race tires, Pagid brake pads, drilled cryo rotors. This is a very special car, fresh and ready for trouble free competition. \$71,500 Gordon Nagle, gnagle@spibeams.com, 570-385-2352.

## PORSCHE THINGS

**Porsche Parts**, Pair of early style OE supplier carbon steel dual inlet heat exchangers off a 3.0L (told they also work with 2.7 & 2.4 engines). Good for track, good condition (small hole in one - 1"x 1/4"). \$185. Single wire oxygen sensor with less than 2000 miles (new \$90) - \$65. John D. Floyd 610-399-3265 johndfloyd@mindspring.com

**Wheels & Parts** - BBS LM 18" wheels 8.5" and 10.5" with or w/o Michelin Sport CUP tires or HOOSIERS. \$3100/set w/tires, \$2600 w/o. BBS Tuner wheels 8.5" and 10.5" with or w/o Michelin Sport CUP tires or HOOSIERS \$3300/set w/tires, \$2800 w/o. Wheels will fit all 993/993TT/996/996TT cars. Ultimate quality. 993 front hood perfect white factory paint \$600.

**Have a picture of your item published.**

Just send along a picture. E-mailed ones are best but we'll try to run whatever you give us.



993 rear complete factory decklid perfect white factory paint \$420 M030 996 suspension \$1500. Joe Fabiani, 215-646-4945 215-646-9828 fax 5

**Gearbox**, Fresh 915 magnesium gearbox, new 7:31 ring & pinion, new quaiife differential, Wevo gate, setup for oil coller (or not), new ratios, etc. Bolt on ready. \$8,000 to build - sell for \$5,500. Tim Holt 610-692-7100 5

**G-50 Gearbox**, from '87 Carrera. "Non" ltd. slip. \$2,000 Tim Holt 610-692-7100 5

**Cage & Roll Bar**, 993 full bolt-in cage w/hard-ware \$450 obo. '74 - '89 911 bolt-in roll bar \$400 obo. Tim Holt 610-692-7100 5

**FOR SALE:** Four 16x6 Fuchs wheels with 205/55 ZR16 BFGoodrich Comp TA R1 tires @ \$450; differentials for 914-6 or 928 S4 @ \$75; front/rear 911SC Ferodo brake pads @ \$25; handheld CB radio @ \$30; early Passport radar detector @ \$40; 2.5lb fire extinguisher @ \$25; helmet intercom set @ \$25; steel 2.5 gal. gas can @ \$5; Mityvac brake bleeder @ \$10; VDO ammeter @ \$10; four 914/6 or early 911 chrome hubcaps @ \$20; pair original 914/6 speakers @ \$15; black 914 headlight surround @ \$10; chrome 914/6 bumper grille (w/out light) @ \$25; yellow racer's tape @ \$5; Alpine #7235 AM/FM/Cassette @ \$35; original 914/6 or early 911 steel spare/tire @ \$15; black vinyl 914/6 driver's seat bottom @ \$5; left 914/6 taillight lens @ \$10. Call Bruce Bristow (609) 921-2466 or dcobruceb@aol.com. 4

**Wheel & Tires**, (2) Fuchs 16x6 w/Blizzak 205/55R16 snow tires & (2) Fuchs16x7 w/Blizzak 225/50R16 snow tires. Wheels are in good cond and tires have less than 500 miles. Willing to sell separately. \$400. Joe Schreiber. (215) 968-3549. jschreiber@adelphia.net 3

**Drivers Education Equipment:** Brey-Krause stainless steel harness bar with belt loops--fits 911 coupes '74 to present--\$200. TRW-Sabeit 6 point camlock harness and belt sets (2) red --- \$100 each. Bar and 2 harnesses \$375. Call Tom Zaffarano 610-644-7588 or tzaffarano@aol.com 4

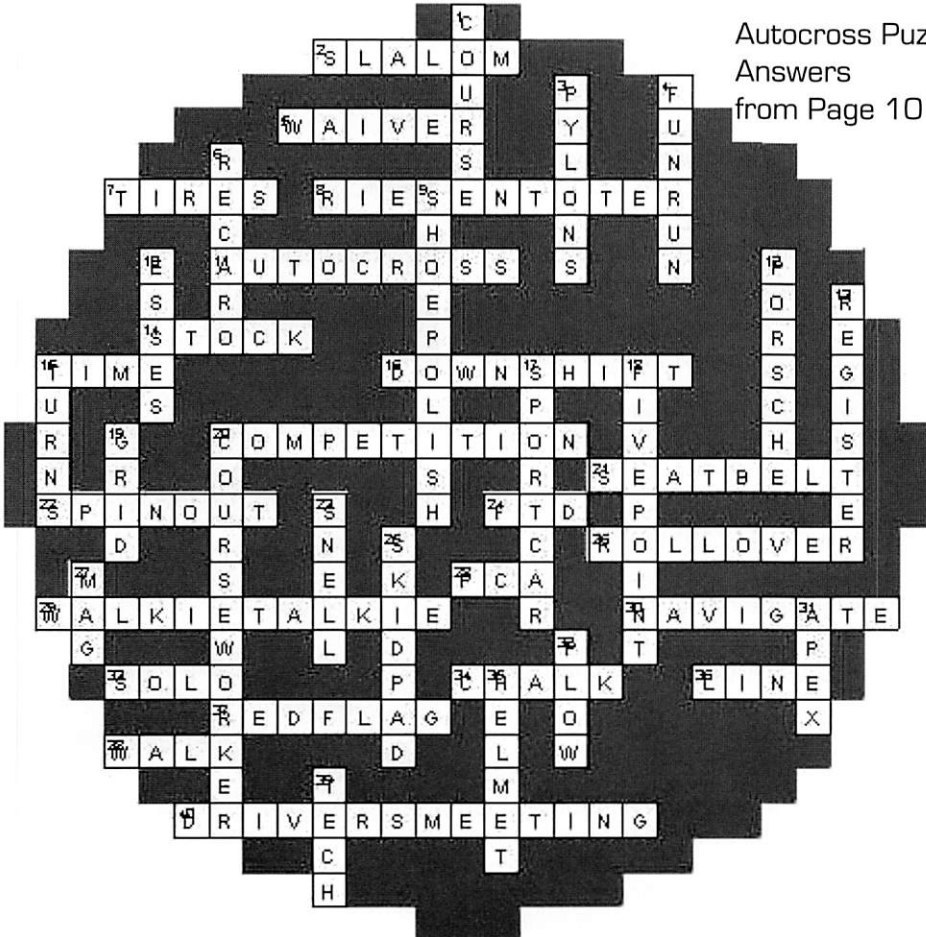
## OTHER STUFF

**00 BMW Z3 Roadster 2.8**, Excel. cond, Topaz Blue Metallic, Black Soft Top, Factory Hardtop, Beige Leather, 5 Speed, Premium Package, Heated Seats and Mirrors, Sport Seats, CD Radio, Computer, Keyless Entry. MSRP \$42,195. No Dings, Paint, Smoke, Accidents, or Track. Garaged. 40k Miles, Factory Warranty until 8/03. Meticulously Maintained. \$24,250. George Fentress, West Chester, 610 436-8356. 5

**00 Ford Expedition 4x4 XLT**. V8 automatic, fully loaded. Towing package. Excellent tow vehicle! \$17,500 484-576-3805 4



Autocross Puzzle Answers from Page 10



*June's*  
*Membership*  
*Meeting -*  
*Brandywine*  
*Porsche*

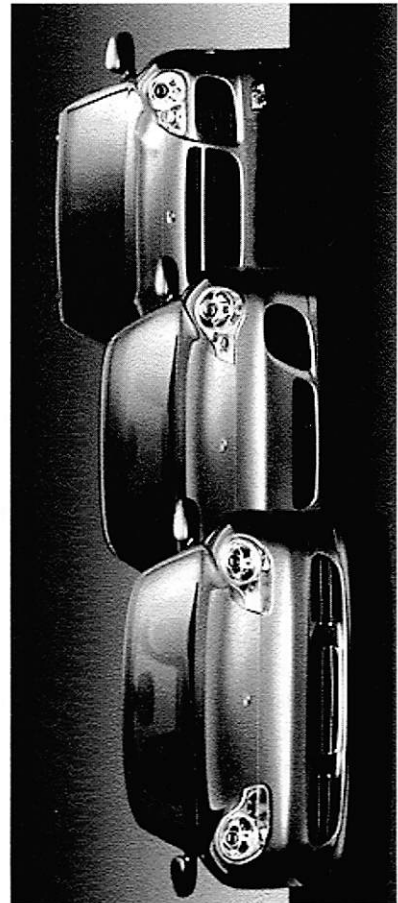
4005 West Chester Pk  
Newtown Square, PA

Directions - 4 miles west of Rt. 476 (Blue Route) on Rt. 3 (West Chester Pk)

June 25

7:30 Social  
8:00 Meeting

Next Month's Meeting



Voting MembersPRESIDENT

Craig Rosenfeld  
Box 306  
Reading, PA 19607  
610-777-6500 (w)  
rcr@visionautogroup.com

VICE PRESIDENT

Tom Zaffarano  
610-644-7588  
tzaffarano@aol.com

TREASURER

Art Rothe  
460 Shelmire Road  
Downingtown, PA 19335  
(610) 873-2373 (H)  
(610) 565-2700 (W)  
awrothe@aol.com

SECRETARY

Terry Lamont  
120 S. Bishop Ave.  
Springfield, PA 19064  
610-626-6178

SOCIAL

Francine Knochenhauer  
1221 Foal Circle  
Warrington, PA 18976  
(215) 343-9464  
francinebodo@aol.com

MEMBERSHIP

Brian S. Minkin  
120 S. Bishop Ave.  
Springfield, Pa. 19064  
610-626-7178  
bminkin1@comcast.net

AUTOCROSS

Jolene Schwartz  
309 Royal Oak Ave.  
Cherry Hill, NJ 08002  
856-866-0913 (W)  
856-667-0970 (H)  
marketvisions@msn.com

EDITOR

Jim McHenry  
Box 210  
8 Deer Woods Lane  
Pt. Pleasant, PA 18950  
(215) 297-0784 (h)  
(215) 297-0749 (fax)  
jimnymac@bellatlantic.net

TRACKEVENTS

Mike Andrews  
215 Jonathan Dnve  
North Wales, PA 19454  
215 368-9362 (h)

Jim Zelinskie,  
Chief Instructor  
644 Store Rd.  
Harleysville, PA  
(215) 256-9357  
jimz@firstleaseonline.com

TECH & SAFETY

Ed Kovalevich  
13 Chatham Lane

Mullica Hill, NJ 08062  
856 223-1303 (H)  
856 778-6986 (W)  
ed.kavo@verizon.net

PAST PRESIDENT

Bill O Connell  
2801 Stoneham Drive  
West Chester,PA 19382  
(610) 640-1675  
woc2@earthlink.net

GOODIE STORE

Liz Zaffarano  
70 Mary Fran  
DriveWest Chester, PA  
19382  
ezaffarano@comcast.net

RALLY

Steven W. Choi  
1413 Meadow Drive  
Blue Bell, PA 19422  
home: 610-279-1312  
roninsps@comcast.net

PCA Race Chair

John Chatley  
1479 Glenbrook Lane  
West Chester, PA 19380  
(610) 696-7125 (H)  
(610) 889-3900 (W)  
jchatley@reilly.com

REGISTRAR

Chris Mahalick  
510 Fletcher Road  
Wayne, PA. 19087.  
610-909-7968  
cmahalick@comcast

EDITOR-at-LARGE & der GASSER BUSINESS MGR.

John Floyd  
Floyd@bnp.com

WEBMASTER

Doug Mahoney  
926 Jackaway Road  
Jamison, PA 18929  
(215) 343-5249  
dsmahoney@aol.com

Appointed Members

AWARDS

Fred Bonsall  
437 High Street  
Bethlehem, PA 18018  
(610) 868-8827 (H)  
(610) 866-0505 (W)  
fbonsall@bsaia.com

HISTORIAN

Bill & Debbie Cooper  
1148 St. Finnegan Dr.  
W. Chester, PA 19382  
(610) 793-9345 barrett356@msn.com

PUBLICIST

Richard E. DeGennaro  
8709 Montgomery Ave.  
Wynmoor, PA 19038  
215-233-3157  
215-233-2397 (fax)  
richdege@verizon.net

Der Gasser is published with the intention of being in members' hands on the 15th of the monthly. Editorial policy is to print as much locally produced material as possible. If we don't get it into this month's issue, we will try next month or the month after. Please include a SASE if return is required. All material for print should be received by the Editor by the 25th of the month previous to the month it is to appear. Copy material in electronic format is **required** although photos may be sent for scanning.

**Address changes** should be sent to both the Membership Chair & National. If you are having problems receiving der Gasser contact the membership Chairperson.

**Classified ads** are free to PCA members and are printed on a space available basis. Ads may be mailed, e-mailed, or faxed to the Editor, are limited to auto-related items, and are subject to editing. Pictures of items may also be printed. Please send with e-mail or via U.S. Postal Service. Contact Editor for Commercial Advertising Rates. Editorial contributions and pictures are welcomed.

**der Gasser** is the official monthly publication of Riesentöter Region, Porsche Club of America. Ideas, opinions, suggestions, etc. are of the authors.

Visit the Riesentöter web page at [www.rtr-pca.org](http://www.rtr-pca.org)



damage policy: Total loss claims are paid on an "Agreed Value" basis, meaning the full insured value of the vehicle is covered, less the applicable deductible. This differs from standard auto insurance in that most standard auto policies pay "Actual Cash Value" (ACV) or "replacement cost minus depreciation." Also differing from standard auto insurance is that the Driver's Ed policy allows for the cost of using "expert" repair shops, recognizing that Porsche owners' D.E. vehicles (which are often modified for better on-track performance) want replacement parts of like kind and quality, installed by an expert Porsche mechanic.

Driver's Ed insurance ultimately provides peace of mind to the Driver's Ed enthusiast since it insulates the family auto policy from potential rate increases or possible non-renewal due to on-track loss. And having that peace of mind can make the on-track experience that much more fun!

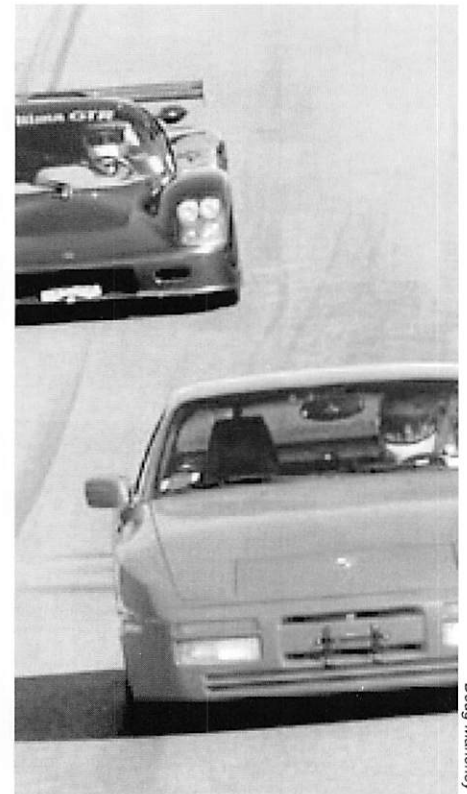
At the time of writing this article, the author is unaware of any specialty programs other than American Collectors that offer specific physical damage coverage for Driver's Ed. American Collectors will offer coverage

through independent agents or to consumers on a direct basis (there is no difference in price one way or the other). Individuals interested in local representation may consider one of the following insurance agents (listed alphabetically), who are also involved in Driver's Ed:

- John Heckman, Hirshorn Company, Chestnut Hill, PA (800) 242-8221
- Holly Kingsford, Canton Insurance, Avon, CT (800) 300-4180
- Tim McElhinny, McElhinny Insurance, Pittsburgh, PA (412) 650-5700
- Lou Millinghausen, Fetterman, Millinghausen & McNutt, Flourtown, PA (215) 233-3500
- Stuart Reiter, Reiter Insurance, Crescent City, FL (386) 698-2400

D.E. Program Directors and anyone else wanting more information on American Collectors may visit [www.AmericanCollectors.com](http://www.AmericanCollectors.com) (click on "Driver's Education") or call 1 (800) 360-2277, ext. 213.

*Terry Kohl is freelance writer and Publicist for a number of automotive companies. She thrills to the sound of high performance engines and specializes in writing about collector automobiles and the automotive marketplace.*



Doug Mahoney



# **DON ROSEN PORSCHE**



1312 Ridge Pike, Conshohocken, PA 19428, 610.279.4100

## ***Another Great "We Have Too Many" Sale***

*( Back by popular demand )*

| <b>PART#</b>                     | <b>DESCRIPTION</b>                                   | <b>SALE</b>    |
|----------------------------------|--|----------------|
| <b>000-044-900-41</b>            | <b>Litronic Headlights for Boxster or 996</b>        | <b>1095.00</b> |
| <b>000-044-900-15</b>            | <b>Litronic Headlights Kit for 993</b>               | <b>1195.00</b> |
| <b>000-044-900-35</b>            | <b>996 or 986 CD Changer Retro-Fit Kit</b>           | <b>629.95</b>  |
| <b>COL-946-size-98</b>           | <b>Porsche Laguna Varsity Jacket</b>                 | <b>159.95</b>  |
| <b>WAP-080-(083/84/85/86)-11</b> | <b>Porsche Basic Cap ( white, black, red, grey )</b> | <b>9.95</b>    |
| <b>WAP-020-SET-05</b>            | <b>New Racing Legends Model Set 1:43</b>             | <b>149.95</b>  |
| <b>WAP-020-SET-03</b>            | <b>Le Mans Model Set 1:43</b>                        | <b>219.95</b>  |
| <b>WAP-020-SET-04</b>            | <b>Turbo Model Set 1:43</b>                          | <b>138.95</b>  |
| <b>930-107-764-01 x10</b>        | <b>930-107-764-01 x10</b>                            | <b>52.95</b>   |
| <b>944-107-201-08 x10</b>        | <b>944, 944T, 924S Oil Filter, 10 Pack</b>           | <b>41.95</b>   |
| <b>986-504-994-01-G2X</b>        | <b>Boxster Speedster Hump Kit</b>                    | <b>795.00</b>  |
| <b>000-044-801-91</b>            | <b>In Dash Cup Holder 996 or 986 w.o. PCM</b>        | <b>66.95</b>   |

*Quantities may be limited, prices are subject to change.*

*Our toll free number is:888-Audi-4-Me*

**Don Rosen Imports**

**1312 Ridge Pike**

**Conshohocken, PA 19428**

***(we can pronounce Conshohocken, don't try it at home)***



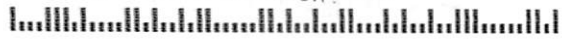
Riesentöter Region

Porsche Club of America

120 S. Bishop Ave.,  
Springfield, Pa. 19064



FIRST CLASS MAIL  
U.S. POSTAGE  
**PAID**  
YORK, PA  
PERMIT #200



Address Service Requested

Dated Material - First Class

For over 20 years Mike Tillson has raced, restored, owned, coveted, bought, sold, and repaired Porsche automobiles. After all these years Mike still cares — call him if you still care!

Guaranteed absolutely the best Porsche shop in Philly today.



**MIKE TILLSON**  
Motor Car Service  
2097 N 63rd St  
Philadelphia, PA



(215) 473-6400

## GOODMAN RADIO COMPANY

QUALITY CAR AUDIO & SECURITY  
HOME THEATER  
EXPERT INSTALLATION  
SINCE 1952

« PORSCHE SPECIALIST »

DISCREET AUDIO SYSTEM UPGRADES  
FOR: 911/993/996/BOXSTER  
CUSTOM REMOTE RADAR DETECTORS  
VIDEO/NAVIGATION SYSTEMS

TECHART PERFORMANCE UPGRADES  
HOME THEATER/WHOLE HOUSE  
MUSIC SYSTEMS  
CUSTOM IN-HOME INSTALLATION

THE BEST EQUIPMENT  
THE BEST INSTALLATION  
THE BEST SERVICE  
GUARANTEED !!!

712-14 LANCASTER AVENUE  
BRYN MAWR, PA 19010  
610-525-2836  
WWW.GOODMANRADIO.COM

## J&J Motors, Inc.



### Personalized Automotive Sales & Services

1111 West Lancaster Avenue Rear  
Bryn Mawr, Pennsylvania 19010-7200

*(Behind Junior League Thrift Shop)*

Joe Moore  
J. Winsor

Service 610-525-3500  
Sales 610-525-5000