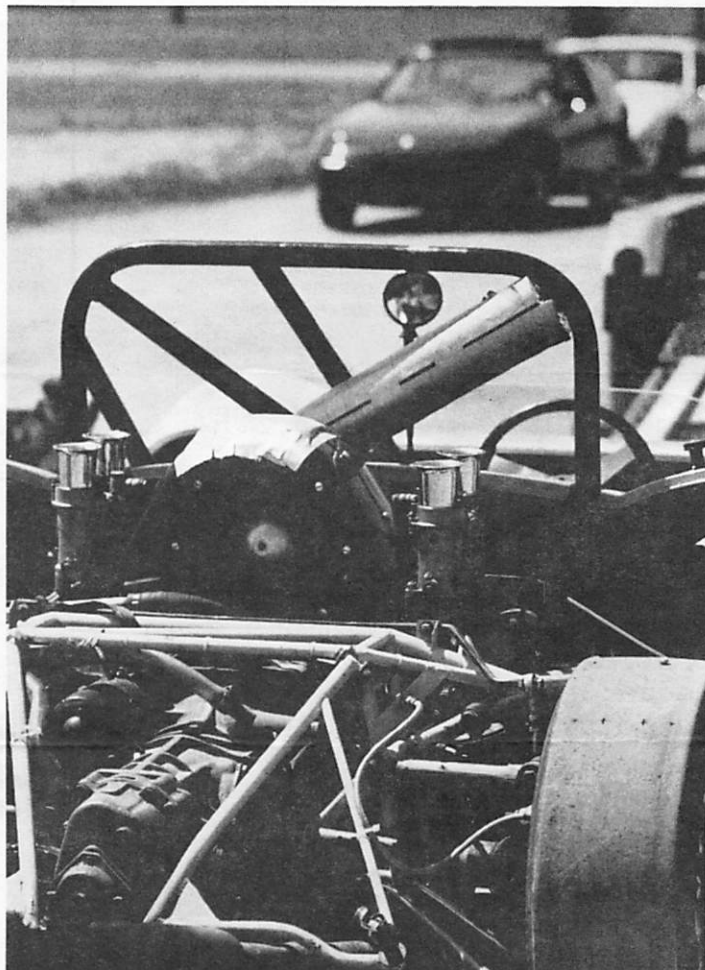


riesentöter region, porsche club of america RCR BLISSCR

MAY
1978



Competition

Our Sprint School at Christmas Village on April 30 was not only successful, but also quite enjoyable. With temperatures in the sixties, plenty of sunshine, and little wind, the day was ideal for pushing our Porsches.

Many veteran drivers were on hand both giving and receiving instruction. Most of our times were a little slower than late last season's, but they showed steady improvement through the day. Our novices showed some really good driving with consistent times.

The best times of our novices were:

- Tom Fabian, 911S, 62.37
- Dan Cerven, 924, 65.69
- Mike Schultz, 356B, 66.69
- Debra Mansfield, 924, 67.30

As you can see, they are quite respectable for the first time running. Needless to say, Ted Szczechowicz turned FTD with a 59.20.

The first event of the Tri-Regional will be hosted by Northern New Jersey at Christmas Village on June 11. Tech. opens at 9:30, first car off at 10:30, and tech closes at 11:00. I expect to see a good Riesentöter turnout so that we won't be overwhelmed by NNJ's vast numbers. We now hold the series trophy, so let's make every effort to retain it.

Riesentöter and Schattenbaum will host the second and third events respectively, so watch the calendar and try to make them all. We will have the same times for tech. and first car off for each of the events (see above).

Listed below are the classes and rules for the Tri-Regional series.

PAUL WALSACK

ELECTED OFFICERS 1978

PRESIDENT Bob Holland
305 Staghorn Way
West Chester, PA 19380
436-6577

TREASURER Don Applestein
11 Furness Lane
Wallingford, PA 19086
565-5716

VICE PRESIDENT Bill Smith
358 Beverly Road
Upper Darby, PA 19082

PAST PRESIDENT Nick Imperato
213 Lenape Drive
Berwyn, PA 19312

SECRETARY Maria Holland
305 Staghorn Way
West Chester, PA 19380
436-6577

SOCIAL CHAIRCOUPLES Bob & Carol Koerbel
337 Virginia Avenue
Havertown, PA 19083
789-0820

COMPETITION CHAIRMAN Bob & Nancy McCullen
323 Ivy Rock Lane
Havertown, PA 19083
789-1532

DER GASSER EDITOR John English
565-5075

MEMBERSHIP CHAIRMAN Dennis Mahoney
P.O. Box 51
Furlong, PA 18925
598-7619

APPOINTED POSITIONS 1978

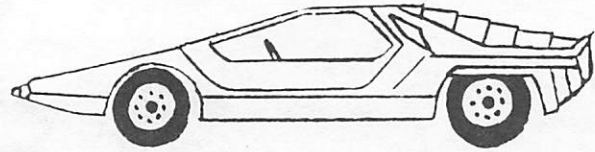
DVSA REPRESENTATIVE Ted Sechowicz
6436 Bingham Street
Philadelphia, PA 19111
342-0294

PHA REPRESENTATIVE Dick Sweigart
1004 Broad Street
Perkasie, PA 18944
249-9138

TECH COMMITTEE CHAIRMAN Joe Bickel
257 Washington Avenue
Phoenixville, PA 19460
933-9525

ASSISTANT EDITOR Steve Buerkle
C-306 Valley Forge Apts.
Valley Forge, PA 19406
783-0855

MOLIN BODY SHOP...America's Finest



228 E. Lancaster Avenue, Wayne, PA 19087

MU8-3600/3473

"SPECIALIZING IN QUALITY, NOT QUANTITY."

GOING TO THE PARADE??

Remember the Parade Art Show. Enter your Porsche-related artwork--seven divisions are provided to cover the various media; awards will be given in both Professional and Amateur categories. See Editor if you need an entry form.

Special Notice

WE WANT YOU !!
for
BRUNCH

When: 12 Noon, Sunday, June 4

Where: Three Mariners Restaurant
Head House Square
Second and Pine Streets

R.S.V.P.—

Bob & Carol Koerbel, 789-0820 OR
Bob & Nancy McCullen, 789-1532

As noted in last month's Der Gasser, the intent is to enjoy a pleasant meal with your fellow Porsche-pushers, then head out in congenial groups to enjoy the shops and historic offerings of New Market, Society Hill, Independence Hall, and whatever catches/tickles your fancy.

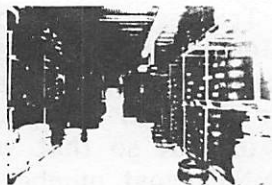
Please note the R.S.V.P. We would like to get word to the restaurant regarding the size of our group, so they can arrange contiguous seating.

Bring yourself, a friend, a wife, an offspring, a sib, all or none or multiples thereof (facsimiles are OK if they're reasonable).

MAIL ORDER TIRE PRICES IN PHILADELPHIA!

Tires by
NTW
National Tire Wholesale

NATIONAL TIRE WHOLESALE
180 Church Road
King of Prussia, Pa.
(215) 265-0900



Convenient to Philadelphia
and Suburban Areas

From the Schuylkill Expressway (Route 76) take King of Prussia Exit. Route 202 North. Proceed 1.7 miles on Route 202 North to Henderson Road. Turn right, travel 7 mile to Church Road (across second set of railroad tracks). Turn right on Church Road. NTW is 1 block on the right.

**Specialists in Mag and Wire Wheels
Mounting and Balancing**

**Balancing on the Hoffman Geodyna
3 Spin Balancer**

**Sport, Race, Truck, Camper, Motorcycle Tires
Michelin, Semperit, Bridgestone, Pirelli, Goodyear, Goodrich,
Kelly Springfield, Stratton, Laramie, Republic, Firestone**

Show Your Membership Card For Dealer Prices

Nchtung!

RULES FOR TRI-REGIONAL EVENTS

May 31	RTR Meeting
Jun 2	Exec. Meeting
Jun 3-4	PHA-Duryea
Jun 4	Brunch, Three Mariners
Jun 4	Potomac Region Swap-Meet (Chuck Allard 301/951-0212)
Jun 9	Der Gasser deadline
Jun 10-11	PHA-Goldmine
Jun 11	Tri-Regional Sprint at Christmas Village (RTR)
Jun 11	DVSA/VFMC sprint, site to be determined
Jun 18	*DVSA/KSCC sprint, Dela. Tech., Wilmington
Jun 28	RTR Meeting
.	
Jul 30	Tri-Regional Sprint
.	
Aug 5	tent. date, RTR Picnic
.	
Aug 11-13	Chesapeake Challenge
.	
Aug 27	Tri-Regional Sprint
.	
Dec 2	RTR ANNUAL BANQUET

You MAY do the following and remain in your production class:

- use transistor or capacitive discharge ignition system
- remove air cleaners (CAUTION: there may be a fire hazard if you do this)
- use other than stock carburetor jets (not venturies)
- use non-stock exhaust system (any system used must meet noise restrictions in effect at the track or autocross site)
- adjust suspension (914's & 924's may be lowered by suitable means; however, only stock springs and torsion bars may be used in the stock classes)
- use sway bars and camber compensators, either added to or different from the original equipment
- use stock or non-stock wheels as follows:
 - 5.5" rim width max for all 914, 912, 356
 - 6" rim width max for 924 and all 911 except 2.7 911S
 - 7" front, 8" rear rims max for 2.7 911S
- use any non-racing tires that will fit without exterior or interior body modifications (except Pirelli P-7 and 50 series); 1/16" minimum tread depth required at all contact measuring points (note: racing tires are defined in the 1977 Parade Competition Rules)
- use safety breaker
- use disc brakes on any pre-1964 car
- add or delete front and rear spoilers (bumper material must remain original factory)

You MAY NOT modify or change items other than those listed above if such modifications are performance-affecting. Racing tires, engine modifications, gutting the interior, etc. are specifically NOT permitted in the Production classes.

Use or deletion of any equipment not covered in the above rules, which in the opinion of the Protest Committee results in increased performance, moves the car into the respective Modified class.

Protests which are upheld may result in disqualification from the event.

Classes must have a minimum of 3 cars (for Men's) and 2 cars (for Ladies'). If fewer cars register in a class, those cars will be bumped up to the next faster class at the end of the series.

There is a maximum of 2 drivers per car per class. There shall be no "2 car" entries for trophies: the car not running for a trophy must be specified before running.

CLASSES FOR TRI-REGIONAL SERIES

Men's Classes--

- A: Turbo RSR, RS, Spyder (six cyl.), modified six cyl.
- B: Spyder (four cyl.), modified four cyl.
- C: 928, 911 (2.7), all '74-'75 Carrera 2.7, 3.0SC
- D: 911S (except 2.7), 911E (2.4), 914/6
- E: 911T (2.4), 911E (2.2)
- F: all other 911, 911L, 911T (2.0-2.2), 911E (2.0), 1500 & 1600 Carrera GS & Carrera 2
- G: 914 (2.0)
- H: 914 (1.7-1.8)
- I: 356 (except Carrera), 912, 912E, 924

Ladies' Classes--

- AL: same as A & B above
- BL: same as C, D, E above
- CL: same as F & G above
- DL: same as H & I above

Ladies have the option of running in either Men's or Ladies' Class, but may not change the selection after running the first event.

Competition

On May 7 the Old York Road Sports Car Club sponsored the first DVSA Championship Event of the season. The results have just arrived, and Porsche-Pushers did very well. Two classes were at least half comprised of Porsches, and Porsches tended to lead the pack. For you statistics nuts, a tabulation follows showing what proportion of each class was Porsche (in those classes where Porsches ran), the time spread, and the extremes of best times.

The fact that the entire field of ten A-Stock entrants ran within three seconds of each other demonstrates the level of competition available at these events. Also, the 14-second spread between Bob Russo's FTD and an unfortunate Firebird's time shows that everyone can get some enjoyment out of this activity.

While the results didn't show models run, we all know Ted Szczechowicz tromps it in a cute little 914 (from his stable of "well-prepared" 2-liter machines): he beat out Bob Ahrens' and Don Reinhard's six-cylinder-powered buggies.

Congratulations, Ted! Bickel will be enthralled! Congratulations also to Bob Russo.

To the rest, keep competing!
(Aspirins to Bob Ahrens)

June Fete Sprint: Selected Data

Class	slowest time	fastest time	time spread	Porsche #	entrants % class
A,S/M	55.802	47.549	8.253	1	20.0%
S/S	55.413	50.626	4.787	3	60.0%
A/S	53.389	50.409	2.980	5	50.0%
B/S	55.962	51.042	4.920	1	8.3%
C/S	60.759	52.303	8.456	4	3.6%
all	61.234	47.549	13.685	14	20.9%

June Fete Sprint 5/7/78 (Porsche results only)

Class	Rank	Name	Time	Points
A,S/M	FTD	B. Russo	47.549	9
S/S	1	B. Ahrens	50.626	9
	2	E. Brown	53.672	6
	3	R. Patton	53.992	4
A/S	1	T. Szczechowicz	50.409	9
	2	J. Wojcik	50.878	6
	7	D. Reinhard	52.527	-
	8	R. Korman	52.687	-
	10	J. Chatley	53.389	-
B/S	8	C. Walter	54.426	-
C/S	2	A. J. Ahrens	52.589	6
	4	P. Walsack	53.190	3
	5	G. Laommler	53.437	2
	9	P. Choate	55.981	-

Technical

Many thanks to Holbert's Porsche+Audi, and especially to Al Holbert, for graciously hosting our Tech Session on April 29. A large gathering of enthusiastic Porsche owners working on and learning things about their cars: that is what it was all about. Of course the coffee, pastry, etc. were also good . . . we'll have another goodie for you later.

TIPS FOR TECH:

Ever have a battery boil over several times? Check the regulator; replace it if it is defective. Also, check the alternator connections outside (and inside, if possible) for dirty, corroded or defective connectors.

Buying a new set of points? Before leaving the Parts Counter, examine them for alignment and squareness of contact area. Do not accept them if they are off too far—save yourself considerable future grief.

JOE BICKEL

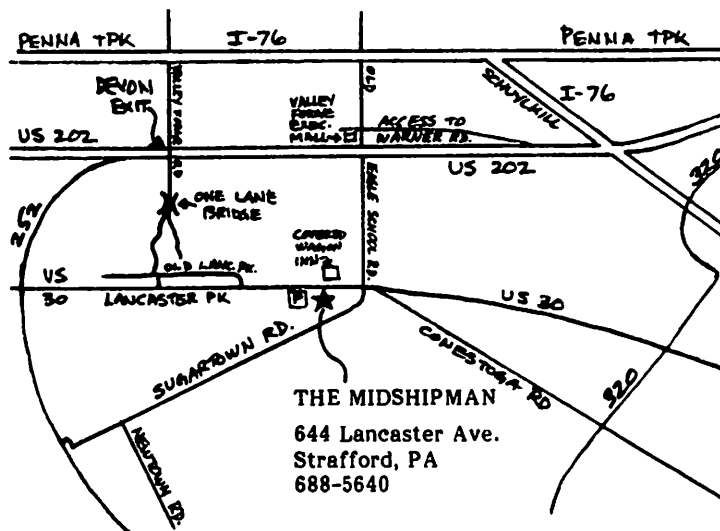
Overheard after the Tech Session:

Torque those lug nuts.
Don't clean platinum plugs.
Why buy platinum plugs, anyway?

Meeting Notice

The May 31 meeting of Riesentöter Region, PCA will be held at 8:30pm at The Midshipman Restaurant, Strafford, PA.

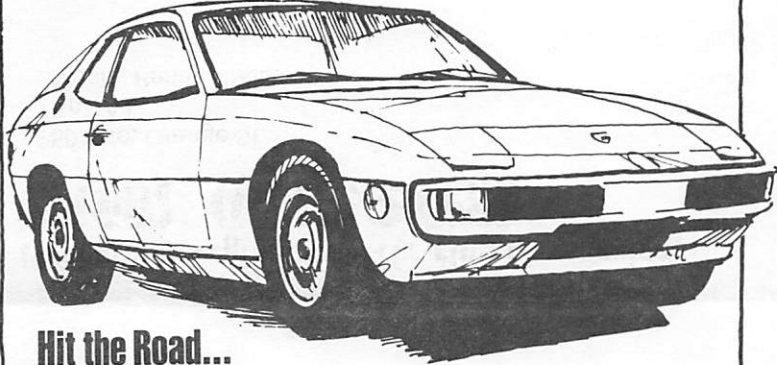
At press time, we were still attempting to confirm Steve Chronister's intent to join us and discuss PCA at the National level (Steve is our Zone Representative).



THE OPEN ROAD... IT STILL BECKONS.



Al Holbert — 1976 IMSA GT Champion



Hit the Road... Porsche, Audi or Volkswagen

Remember the way it used to be? You'd buy a car because you really loved to drive. Your machine had a little better performance than your neighbor's car. It was a pleasure to hit the throttle and get moving. And Handle? How often did you take that back-road turn a wee bit faster than normal just to feel the response as you cranked the steering wheel over hard left? Yes, those were the days. And those still ARE the days!

If you're tired of dragging that gas guzzler down the highway, come into Holbert's and test drive a Volkswagen, Porsche or Audi. We think you'll be pleasantly surprised to find performance, fuel economy and creature comfort all wrapped into our superbly engineered motor cars.

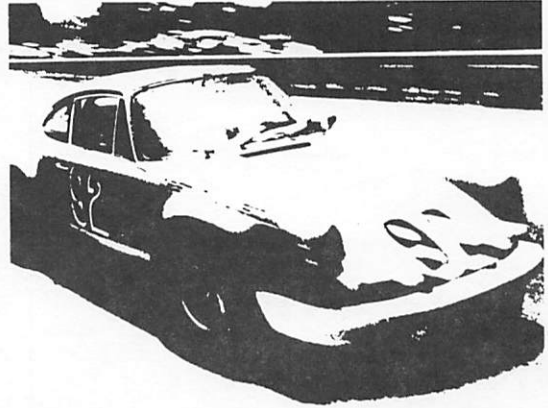
THE OPEN ROAD . . . IT STILL BECKONS.
And at Holbert's . . . We'll put some fun back into your driving.

HOLBERT'S

PORSCHE, AUDI
DI3-2891

SALES, SERVICE, PARTS, FINANCING, LEASING
ROUTE 611 WARRINGTON

VOLKSWAGEN
DI3-1600



COMMITTED

to high performance machinery . . .
to selling it, to servicing it
and to racing it.

2097 North 63rd Street, Phila./GR 3-6400

MIKE TILLSON
Motorcar Service and Sales



ROBERT B. KOERBEL
215-649-9219

PRECISION MOTOR WORKS, INC.

15 HOLLAND AVENUE
ARDMORE, PA. 19003

Specializing in Porsche & Fine Imported Cars

REPAIRS

PARTS

SALES

356 • 911 • 912
924 • 926 • 928
356 • 911 • 912
924 • 926 • 928

PORSCHE PARTS, ACCESSORIES & TYRES

SUBTLE DYNAMICS

1427 N. 75th St., Overbrook, Pa. 19151

Steve Oxenfeldt

(215) 473-1414

NEW
EXCLUSIVE
LEASE • FLY • TOUR

SIMPLY LEASE YOUR NEXT

PORSCHE

TO BE DELIVERED ABROAD

complete with

round trip tickets for two,

ROBINSON MERIT
LEASING INC.

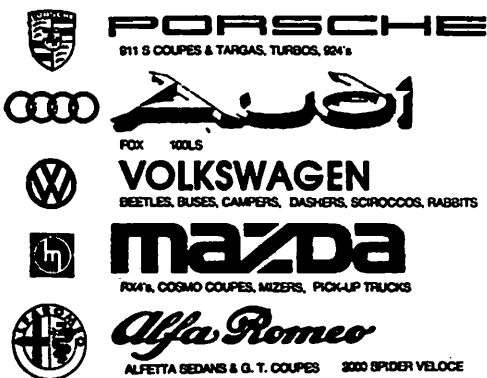


Norman Robinson
215 825-2107

521 WEST LANCASTER AVE.,
HAVERFORD, PA. 19041

501 No. Orange St.
Apt. A1
Media, Penna. 19063

representative region, Porsche club of America



There's
a new kind
of Porsche
in our
showroom.



Porsche 924

A Porsche like no other Porsche that's gone before it.

An engine up front. A hatch in the back. And an innovative rear transaxle design that results in superb handling and performance.

Come in and experience this new kind of Porsche. And while you're there, look over our other Porsches and our family-size Audis, too.

SALES
9 to 9 M-F
9 to 5 Sat.

PARTS & SERVICE
8:00 A.M. to 12:30 AM
Monday thru Friday

Master Charge
Bank Americard/Visa

FOR SALE

1972 911T engine parts. Just re-placed engine. For sale - fuel injection pump, crank shaft, much more. H. David Spirt, 1427 Joel Dr., Ambler PA 19002; (day)215/277-1767, (night) MI6-3433.

1973 911S #9113301376; 37,554 mi; 5-sp; pastel blue, blk inter, velour carpet; new Konis, XWS; Recaro; tint glass; mech. fuel inj.; hi cap dis ign.; F & R bars; AM-FM stereo; Por. rac. muffler; garaged; current maj. maintenance, excellent cond. \$11K (firm). Dr. Albert Thompson, 2510 Dovershire Rd., Richmond, VA 23235 804/272-5198 (after 7)

FOR SALE

4 Minilite 7.5x15 alloy rims
4 Goody. slicks (new) 23x8.5x15
20 88mm wheel lugs
8 1/4" alloy spacers
2 Cibie Z-Beams
14" Por. Rac. St. Wheel
F & R 10-way adj. Rac. Koni
6 - W270 T17
6 - W265 P21

Dr. Alber Thompson (see previous ad)