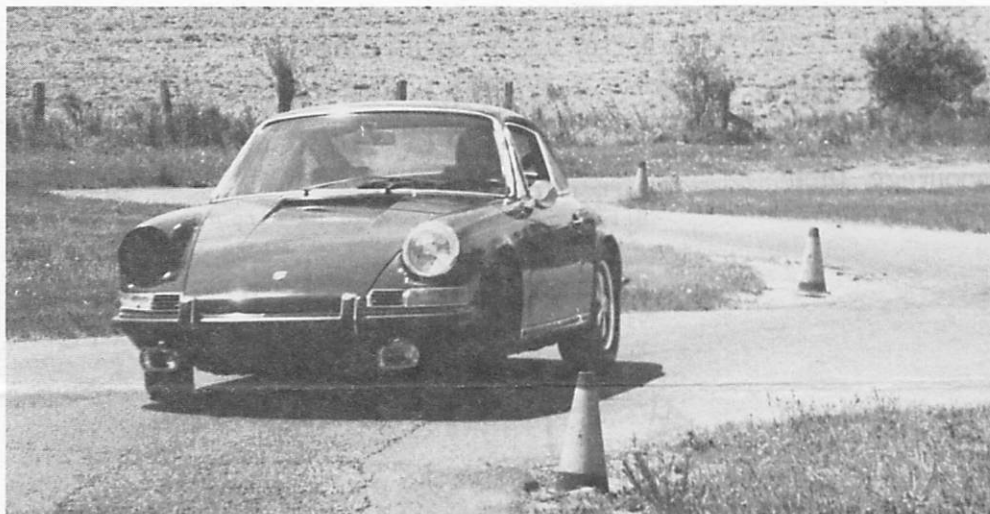


# riesentöter region, porsche club of america

# DM GISSON

APRIL  
1978



## President's Message

Now that spring weather has finally arrived in our area, I am beginning to get ready for my favorite Porsche activity: sprinting. During the winter the Porsche had new shocks installed at a tech session; I'm now putting on new tires and installing mechanical chain tensioners. All systems are being checked out. Hopefully, I will get it all together in time for our Sprint School April 30.

If you have ever thought you may have an interest in sprinting, the Riesentoter Sprint School is the place to learn what it's all about.

First we will tech-inspect your Porsche (but it's a good idea to check the tires, braking system, steering, suspension, engine compartment, and other areas before you go). Then we will show you the basic techniques of sprinting. Afterward you will have plenty of track time to develop your skills.

Christmas Village is an excellent place to start your sprinting interest. Come to the Sprint School and do it on the blacktop.

Bob

## Meeting Notice

"WHAT'S MY LINE??"

8:30 p.m., Wednesday, April 26, 1978

The Midshipman Restaurant  
Route 30 at Old Eagle School Road  
Strafford, Pennsylvania

Many Riesentoter members are hooked on sprinting (autocrossing, to some), which is probably the least expensive, least risky, and most accessible legal means by which one may drive his or her Porsche (or even his/r Galaxy 500) to its handling limits.

To commemorate the advent of spring and sprint season, we hope to entice our newer members (and those with tenure but as yet

dormant) to convert latent interest into active competitive spirit. Toward that end we have commandeered a

MEL FELDMAN SLIDE EXTRAVAGANZA

Mel, of course, was last season's Competition Chairman. His sorties at Christmas Village included critical analysis of the proper "line" for that sprint course: our program will include a presentation of Mel's slides, and a thorough discussion of how to tackle the Christmas Village track (where we will be having the Sprint School and a number of sprints this season).

Join us at the meeting: our aim is for you to get the drift, get the inclination, and get on out to the blacktop.

## BENEFICIAL OUTGROWTH

Remember how you borrowed someone else's safety helmet the first (and several subsequent) time(s) you ran a sprint course? Have you upgraded to a better model recently, or maybe acquired a longer hair style? Got an oldiebut-goodie?

Donate your outgrown or superceded safety helmet to the Club for its use at official RTR sprints—help us make it easier for our beginners to get a loaner, and thereby encourage their participation.

## Competition

With the winter's snow and bitter cold behind us (with great relief) we are looking forward to having fun with our Porsches again. For some of us it means sprint season will soon begin.

This year will see the rebirth of an Inter-Regional Series with Northern New Jersey and Schattenbaum. Unfortunately Jersey Shore will not be included because neither I nor the other regions have been able to get in touch with their officer to arrange their participation. Undaunted, we feel we will have a rather interesting series with very intense competition. Northern New Jersey's ability in competition is well known, and I have been informed that Schattenbaum has developed some smooth drivers.

With this tough competition facing us, we will have to tune up both our cars and ourselves. I have set up April 30 for a Riesentoter Sprint School, to be held at Christmas Village, and I am sure many of our experienced drivers will attend to help the novices and infrequent drivers get the most from their cars.

You will be amazed at what your car can do if you handle it properly. We all face emergency situations from time to time, sometimes with unhappy endings that could have been avoided by taking advantage of your car's capabilities. This Sprint School will show you what those capabilities are while you are having fun pushing your Porsche the way it was intended to be.

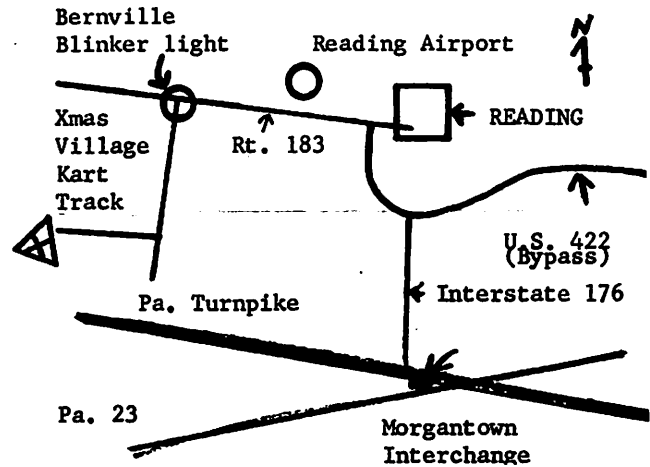
There will be a Ladies' Calss in the Inter-Regional, so girls, please come out. I know we have some very good drivers among you, but only a few of you gals show up for the sprints. Don't let the men have all the fun: share in the thrill of driving your Porsche.

The dates for the Inter-Regional are June 11, July 30 and August 27. Not all sites have yet been confirmed, and

we have not yet settled which Region will host on the individual dates, but we should have this information in time for publication in the next issue of Der Gasser. In addition, keep May 21 and August 6 open so that you can come out and show your stuff when we sponsor DVSA sprints on these dates.

Hope to see you all on April 30, and often thereafter on the sprint tracks.

PAUL H. WALSACK



**BEST ROUTE TO TRACK:** Pa. Tpk. to Morgantown exit; follow signs to Interstate 176; stay on 176 until intersection with U.S. 422 bypass west; stay on 422 around Reading, then keep a sharp eye out for Pa. Route 183 signs. Stay on 183, past the Reading Airport about 8-10 miles to the blinker light at Bernville; left at blinker, then follow signs to "Christmas Village."

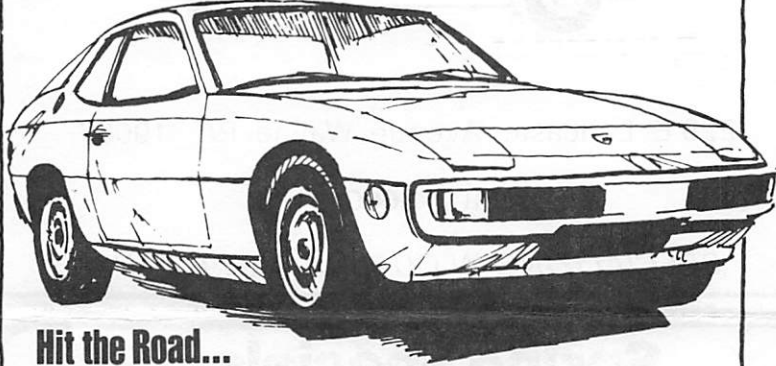
## Achtung!

- |           |   |
|-----------|---|
| Apr 23/24 | SCCA event & Swap Meet at Pocono Raceway          |
| Apr 26    | Meeting at Midshipman                             |
| Apr 29    | Tech Session at Holbert's                         |
| Apr 30    | PCA Sprint School-XMas V.                         |
| Apr 30    | DVSA/VFMC-GE @ King of Pr                         |
| May 5     | Exec. Committee                                   |
| May 7     | *DVSA/OYRSCC-Willow Grove Bowling Lanes, Rte 63   |
| May 12    | <u>Der Gasser</u> Deadline                        |
| May 14    | Rain Date for /OYRSCC                             |
| May 20/21 | PHA Driver's School and SCCA Solo I @ Watkins Gln |
| May 21    | *DVSA/PHA-Bucks Co Coll.                          |
| May 31    | Meeting at Midshipman                             |
| Jun 2     | Exec. Committee                                   |
| Jun 3/4   | PHA Duryea Hillclimb                              |
| Jun 4     | PCA Brunch-Three Mariners                         |
| Jun 4     | Potomac Region Swap Meet                          |
|           | Chuck Allard 301/951-0212                         |
| Jun 9     | <u>Der Gasser</u> Deadline                        |
| Jun 11    | PHA Inter-Regional Sprint                         |

# THE OPEN ROAD... IT STILL BECKONS.



Al Holbert — 1976 IMSA GT Champion



## Hit the Road... Porsche, Audi or Volkswagen

Remember the way it used to be? You'd buy a car because you really loved to drive. Your machine had a little better performance than your neighbor's car. It was a pleasure to hit the throttle and get moving. And Handle? How often did you take that back-road turn a wee bit faster than normal just to feel the response as you cranked the steering wheel over hard left? Yes, those were the days. And those still ARE the days!

If you're tired of dragging that gas guzzler down the highway, come into Holbert's and test drive a Volkswagen, Porsche or Audi. We think you'll be pleasantly surprised to find performance, fuel economy and creature comfort all wrapped into our superbly engineered motor cars.

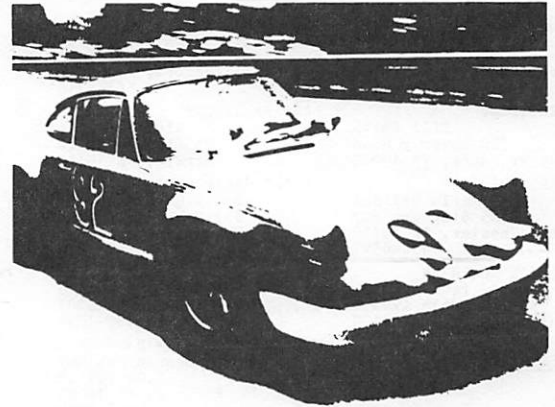
THE OPEN ROAD . . . IT STILL BECKONS.  
And at Holbert's . . . We'll put some fun back into your driving.

## HOLBERT'S

PORSCHE, AUDI  
DI3-2891

SALES, SERVICE, PARTS, FINANCING, LEASING  
ROUTE 611 WARRINGTON

VOLKSWAGEN  
DI3-1600



## COMMITTED

to high performance machinery . . .  
to selling it, to servicing it  
and to racing it.

2097 North 63rd Street, Phila./GR 3-6400

**MIKE TILLSON**  
Motorcar Service and Sales



ROBERT B. KOERBEL  
215-649-9219

**PRECISION MOTOR WORKS, INC.**

15 HOLLAND AVENUE  
ARDMORE, PA. 19003

*Specializing in Porsche & Fine Imported Cars*

REPAIRS

PARTS

SALES

356 • 911 • 912  
924 • 926 • 928  
356 • 911 • 912  
924 • 926 • 928

PORSCHE PARTS, ACCESSORIES & TYRES  
**SUBTLE DYNAMICS**  
1427 N. 75th St., Overbrook, Pa. 19151

Steve Oxenfeldt

(215) 473-1414

NEW  
EXCLUSIVE  
LEASE • FLY • TOUR

SIMPLY LEASE YOUR NEXT

**PORSCHE**

TO BE DELIVERED ABROAD

complete with  
round trip tickets for two,

**ROBINSON MERIT**  
LEASING INC.



Norman Robinson  
215 525-2107

521 WEST LANCASTER AVE.,  
HAVERFORD, PA. 19041



ELECTED OFFICERS 1978

|  |   |
|--|---|
| <b>PRESIDENT</b><br>Bob Holland<br>305 Staghorn Way<br>West Chester, PA 19380<br>436-6577                | <b>TREASURER</b><br>Don Applestein<br>11 Furness Lane<br>Wallingford, PA 19086<br>565-5716                  |
| <b>VICE PRESIDENT</b><br>Bill Smith<br>358 Beverly Road<br>Upper Darby, PA 19082                         | <b>PAST PRESIDENT</b><br>Nick Imperato<br>213 Lenape Drive<br>Berwyn, PA 19312                              |
| <b>SECRETARY</b><br>Maria Holland<br>305 Staghorn Way<br>West Chester, PA 19380<br>436-6577              | <b>SOCIAL CHAIRCOUPLES</b><br>Bob & Carol Koerbel<br>337 Virginia Avenue<br>Havertown, PA 19083<br>789-0820 |
| <b>COMPETITION CHAIRMAN</b><br>Paul Walsack<br>3017 Midvale Avenue<br>Philadelphia, PA 19129<br>848-9089 | <b>MEMBERSHIP CHAIRMAN</b><br>Dennis Mahoney<br>P.O. Box 51<br>Furlong, PA 18925<br>598-7619                |
| <b>DER GASSER EDITOR</b><br>John English<br>565-5075   |   |

APPOINTED POSITIONS 1978

|   |  |
|---|--|
| <b>DVSA REPRESENTATIVE</b><br>Ted Sechowicz<br>6436 Bingham Street<br>Philadelphia, PA 19111<br>342-0294    | <b>PHA REPRESENTATIVE</b><br>Dick Sweigart<br>1004 Broad Street<br>Perkasie, PA 18944<br>249-9138          |
| <b>TECH COMMITTEE CHAIRMAN</b><br>Joe Bickel<br>257 Washington Avenue<br>Phoenixville, PA 19460<br>933-9525 | <b>ASSISTANT EDITOR</b><br>Steve Buerkle<br>C-306 Valley Forge Apts.<br>Valley Forge, PA 19406<br>783-0855 |

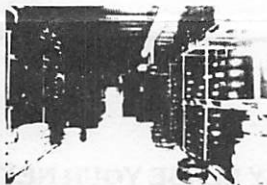
NOTICE

We will soon publish a Ries-entöter Region Membership Roster, including name and city of residence only. If you do NOT want to be listed, contact Dennis Mahoney, P.O. Box 51, Furlong, PA 18925, 598-7619.

**MAIL ORDER TIRE PRICES  
IN PHILADELPHIA!**

Tires by  
**NTW**  
National Tire Wholesale

**NATIONAL TIRE WHOLESALE**  
180 Church Road  
King of Prussia, Pa.  
(215) 265-0900



Convenient to Philadelphia  
and Suburban Areas

From the Schuylkill Expressway (Route 76) take King of Prussia Exit Route 202 North. Proceed 1.7 miles on Route 202 North to Henderson Road. Turn right, travel 7 miles to Church Road (across second set of railroad tracks). Turn right on Church Road. NTW is 1 block on the right.

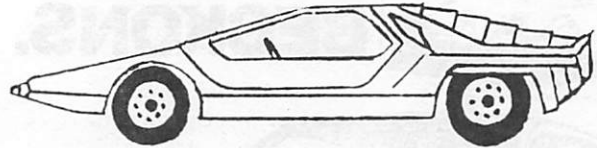
**Specialists in Mag and Wire Wheels  
Mounting and Balancing**

**Balancing on the Hoffman Geodyna  
3 Spin Balancer**

**Sport, Race, Truck, Camper, Motorcycle Tires**  
Michelin, Semperit, Bridgestone, Pirelli, Goodyear, Goodrich,  
Kelly Springfield, Stratton, Laramie, Republic, Firestone

**Show Your Membership Card For Dealer Prices**

**MOLIN BODY SHOP... America's Finest**



228 E. Lancaster Avenue, Wayne, PA 19087

MU8-3600/3473

"SPECIALIZING IN QUALITY, NOT QUANTITY."

**Spring Specials...**

**SEMPERIT**  
V-600  
steel radials  
185/70vr15  
\$88ea.

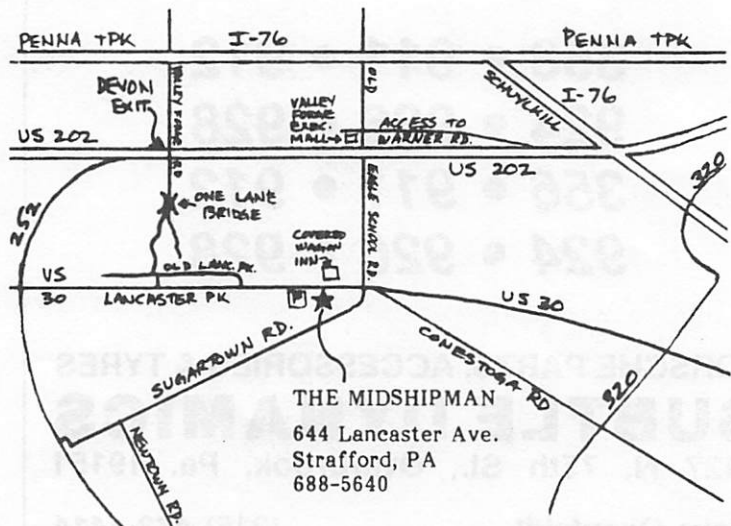
**Windshields**  
for 911 models  
Tinted-\$126. Shaded-\$136.50

**BBS** 7x15-Gold  
center mags  
\$684 set of 4  
with lugs and caps



**AUTOBAHN**  
Imported Car Parts & Accessories

254 DeKalb Pike, King of Prussia, PA 19406 (215) 265-8833



**THE MIDSHIPMAN**  
644 Lancaster Ave.  
Strafford, PA  
688-5640

## TREASURER'S REPORT

January 1, 1978 to March 31, 1978

Beginning Balance as of  
January 1, 1978: \$639.48\*

|                             |                 |
|-----------------------------|-----------------|
| <u>Income</u>               |                 |
| Interest on Savings Account | \$ 10.54        |
| Ads in <u>Der Gasser</u>    | 194.00          |
| 50/50                       | 8.25            |
| Non Porsche Drivers         | 8.25            |
| Tech Session                | 8.00            |
| Reimbursement from National | 357.00          |
| <b>TOTAL INCOME</b>         | <b>\$586.04</b> |

|                             |                 |
|-----------------------------|-----------------|
| <u>Disbursements</u>        |                 |
| Riesentoter Award engraving | \$ 13.80        |
| P.H.A. Membership dues      | 25.00           |
| President's Trophy          | 25.02           |
| February Meeting's Prizes   | 6.91            |
| <u>Der Gasser</u> printing  | 238.93          |
| <u>Der Gasser</u> mailing   | 74.87           |
| <b>TOTAL DISBURSEMENTS</b>  | <b>\$384.53</b> |

**NET GAIN \$201.51**

Ending Balance as of  
March 31, 1978: \$840.99\*

\*These balances include \$300.00 which has been set aside to be used for the possible purchase of a timer, and \$50 in petty cash.

Respectfully submitted,  
DONALD APPLESTEIN

## Special Notice

WHAT'S HOT???

928's, jogging, backpacking, and BRUNCH! Mark it on your calendar that we're having brunch on Sunday, June 4, at the Three Mariners restaurant in Head House Square. We'll meet at the restaurant about noon, enjoy some tasty morsels, and then the day is yours.

"New Market" is a stone's throw from the restaurant, providing a variety of shops featuring handcrafted items, antiques, wicker, dollhouses, and more. For the history buffs in the crowd, a walk through Society Hill will offer historical homes, churches, and museums. If you care to venture a few more blocks, there's Independence Hall and the Liberty Bell. When's the last time you've seen them? Me too! Non-walkers can hail a horse-drawn carriage and enjoy the sights just as well.

Penn's Landing provides intriguing ships, puppet shows, and benches in case you'd just like

to sit and watch the world go by.

All in all, the area should provide something somewhere to pique your interest. So revv up your engine, slip on your Addidas's, pack up your backpack, and join us for brunch—while it's hot!!!

YOUR SOCIAL CHAIRCOUPLES

## Technical

TECH SESSION

Saturday, April 29, 9:00 a.m. to ...?

Holbert's Porsche+Audi  
route 611, Warrington, PA

Spring has finally arrived, so let's bring our cars out and celebrate by giving them a check-up on whatever.

No matter what model Porsche you drive, I am sure we will have someone there to help answer your questions. Even if you don't work on your car it doesn't hurt to be informed. The very least you should do is get that dirty oil and oil filter replaced with new stuff.

The parts department will be open to serve you, but please bring your own tools, as the Holbert's mechanics should not be asked to loan their personal equipment to any of us (most Club members, however, will bail you out in time of need as long as you're not a chronic offender).

TECH TIP: When pricing or buying new tires it is important to ask about and get confirmation of the price used when an adjustment of a tire is made in case you need it. Many outfits use an inflated list price and adjustment charge when making good on a defective tire. This I researched. N.T.W will adjust at their stated catalog selling prices.

Patronize our advertisers (among which is N.T.W.)—they support Der Gasser.

JOE BICKEL

LE SACRE DU PRINTEMPS

Elated by passing of winter,  
A frustrated PCA sprinter

Saw potholes and farmers

As pylons and flaggers—

The oversteer gave him a blister.

Another (he concurs had reckoned:

Drove naught 'til the weather man beckoned)

Was so taken by spring

That he mangled his thing

By downshifting, fifth gear to second.



10KVAMOKVAMOKVAMOKVAMOKV  
 HOXESHOXESHOXESHOXESHOXESH  
 UNYUONKHVAMOKVAMOKVAMOKV  
 HOKESHOKESHOKESHOKESHOKESH  
 OKVAMOKVAMOKVAMOKVAMOKVAMOKV  
 HOKESHOXESHOXESHOXESHOXESH  
 OKVAMOKVAMOKVAMOKVAMOKVAMOKV

Media, Penna. 19063  
 Apt. A1  
 501 No. Orange St.



**SCOTT WEISS**  
 President, Porsche Club of America

**PORSCHE**  
 911 S COUPES & TARGAS, TURBOS, 924's

**Audi**  
 FOX 100LS

**VOLKSWAGEN**  
 BEETLES, BUSES, CAMPERS, DASHERS, SCIROCCOS, RABBITS

**MAZDA**  
 RX4's, COSMO COUPES, MIZERS, PICK-UP TRUCKS

**Alfa Romeo**  
 ALFETTA SEDANS & G. T. COUPES 2000 SPIDER VELOCE

**YBH**  
 PORSCHE - AUDI INC.  
 SALES • SERVICE • LEASING  
 WEST CHESTER PIKE  
 3 MI. WEST OF NEWTOWN SQ. SHOPPING CTR.  
 EL 6-8000 • NI 4-8222

There's  
 a new kind  
 of Porsche  
 in our  
 showroom.



Porsche 924

A Porsche like no other Porsche that's gone before it.  
 An engine up front. A hatch in the back. And an innovative rear transaxle design that results in superb handling and performance.  
 Come in and experience this new kind of Porsche. And while you're there, look over our other Porsches and our family-size Audis, too.

**SALES**  
 9 to 9 M-F  
 9 to 5 Sat.

**PARTS & SERVICE**  
 8:00 A.M. to 12:30 AM  
 Monday thru Friday

Master Charge  
 Bank Americard/Visa

1969 - 912/5 PORSCHE cpe. #129021233 - Polo red with black int.

I purchased the car new in May 1969, having used it primarily for "concoors" and have collected 20 trophies for 20 shows. It has a blaupunkt am/fm radio, 13mm front stabilizer bar, factory fog lights and original steel wheels with new Michelin XWX tires. The vehicle has 17,000 miles of highway use in fair weather and has never been in any rain or snow and has been spared of wash jobs, as they were not needed.

This Porsche is nicer than new and is completely original. It is being sold as we no longer have time to "show" the car.

SELLING PRICE \$9,000.00.

John W. Kinzey

Telephone days (215) 376-7396  
 PMs (215) 779-1136 (after 8:00 P.M.)

FOR SALE

Single Weber (40 IDA), manifold, air cleaner and throttle linkage for dual-port VW. Never installed, \$130 list, yours for \$100. Vern Lyle 287-9521