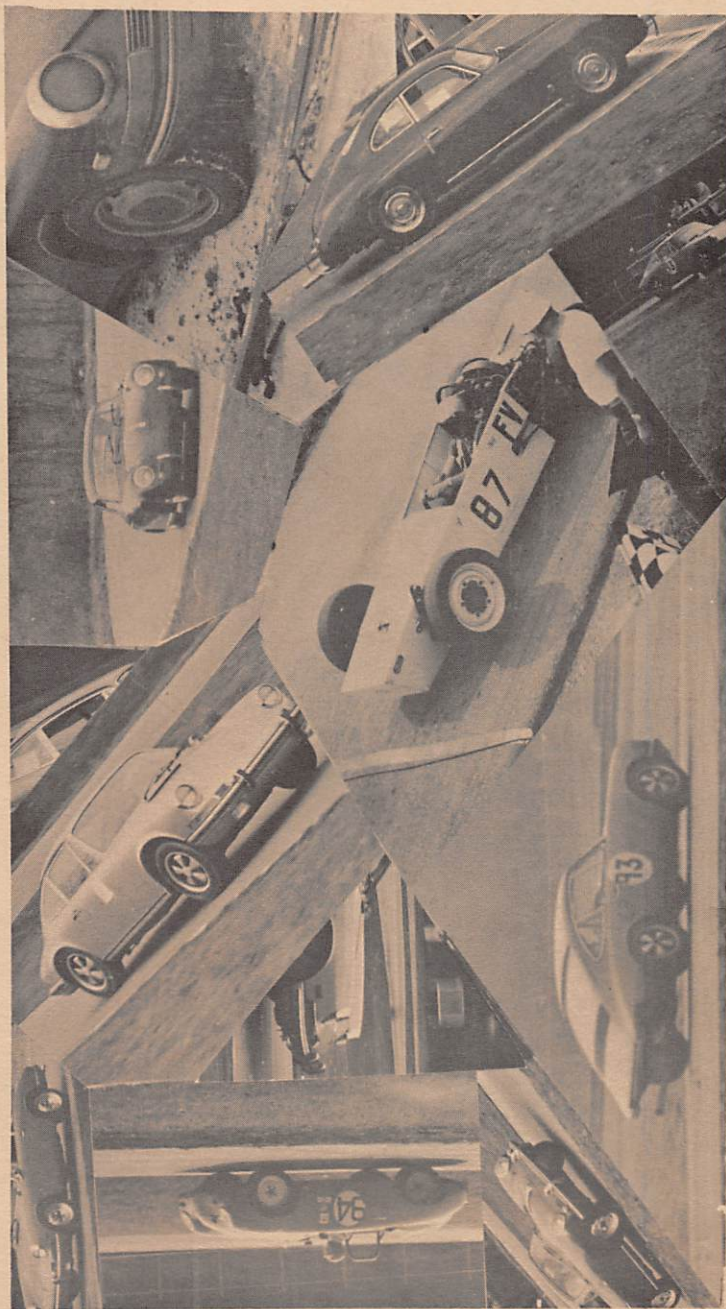


Porsche Club of America

DEAR MEMBERS



may 1971

Riesentoter Region

HOLBERT'S

PORSCHE | AUDI

*Extends a warm welcome
to the members of
the PCA*



For those who expect quality
1425 Easton Rd., Warrington, Pa.

215 D1 3-2890

Get ready for summer.



The mid-engine Porsche 914

Now is the time to make your move toward a 914! Summer is almost here and that means top-down weather. Don't be left out of the sun, experience it all. We have most colors in stock, so spend a little time on a test drive with us soon.

**FOR SALES ASSISTANCE
CALL: BILL REMS or
FRANK SETZER**

**FOR SERVICE
CALL:
DON NYE**

**ROGER PENSKE
PORSCHE | AUDI**

2120 33RD STREET, S.W., ALLENTOWN, PENNA. 18103 • (215) 967-4171

President's Message

Being a good Porsche wife requires, first of all, the good-natured acceptance of the fact that, no matter what, THE PORSCHE comes first.

It also means a lot of other things. Like pounding out the "President's Message" when the President is too tired, too busy or simply without a thought in the world on what to write about. Never mind that you are tired, even busier -- but, of course, never without plenty of thoughts.

Being a good Porsche wife is:

- * keeping your cool when your brand-new oven is used to bake the crackle paint on various Porsche parts (It works.)
- * watching in silence as bits and pieces are placed in your dishwasher for thorough cleansing (This removes grease, etc., but may cause rust.)
- * refraining from mentioning that all that money being spent on the Porsche could be used to get a new sofa, buy a fur coat, take a vacation in Spain
- * keeping the last Wednesday of the month free from other activities
- * devoting at least one Sunday a month to a sprint or other Porsche event
- * learning that if you don't spend at least part of your time in the garage, you'll never see your husband
- * realizing that it is best to lie like crazy if the Porsche should acquire any kind of scratch or dent while in your psssession

The list is endless. I'm sure most of you wives have shared my experience of being unable to go out of the driveway until the Porsche has been properly bathed. It doesn't matter that you'll

be late to the party and it's dark so no one will see the car anyway. How many stories we could tell about Porsches and their owners!

But there must be something special about them. I've been married to an owner for almost 12 years. And about a year and a half ago we were supplied with a company car which the heavier half of the family began to use to drive to work. (City traffic is no good for a Porsche.) Well, my Barracuda suddenly developed all kinds of ailments. Nothing specific, you understand. It just didn't like the cold, didn't run too well in the snow, the engine didn't sound quite right -- That kind of thing. I spend a glorious few months tooling around in the 912 until, alas, it came into the garage to be dismantled for restoration. (A process that consumes more than a year simply cannot be called "getting ready for a concours".) Soon it will be back together and it will be a Le Mans start to see whether the Porsche owner or the good Porsche wife is first to take the wheel.

by

The President's First Lady

P.S.

My mind is not completely "without a thought in the world on what to write about".

After the success at Valley Forge today, I can only say how great it is to see so many members and their families and friends out to an event. Wayne Flegler, our Activities Chairman, is to be congratulated for all the hard work he put in to making the day so successful. Believe me, a lot of planning and preparation are required to put on a first-class, smooth-running event.

It was also a pleasure to find so many volunteer helpers on hand.

DEADLINE !!

ALL MATERIAL FOR DER GASSER MUST BE SUBMITTED BY THE 1ST OF EACH MONTH!!!

It looks like we're off to a good start with well-run events and enthusiastic participation. If you haven't joined us yet, plan now to come out in June.

Love, The President

P.P.S. A good Porsche wife let's her husband drive the Porsche.

coming events

May 23 Hobo Hillclimb sponsored by Northern New Jersey Region of PCA. Details on page 12.

May 26 Monthly meeting at the Springfield Hotel in Flourtown. It starts at 8:00 p.m. sharp. A Porsche factory film will be shown.

June 20 A Day trip through the Penna. Dutch country. Bring your own lunch in case we can't locate a place to eat. The starting point will be the Korvette Tire Center, King of Prussia Mall, at 10:00 a.m. sharp.

June 27 Sprint - Bushkill Pines Raceway. Practice starts at 10:00 a.m. - timed runs at 12:00 noon.

June 30 Monthly meeting

July 6-10 Porsche Parade @ Sun Valley

July 18 Sprint at Bushkill Pines Raceway

July 28 Monthly meeting

August 15 Ridge's Ralley - Ridge Ryman Rallemaster.

August 29 Porsche Picnic & Sprint (Cornog)

August 25 Monthly meeting

September 26 DVSA Sprint hosted by PCA at Cornog

September 29 Monthly meeting

October 10 Driver's School at Pocono International Raceway - Sponsored by Roger Penske Porsche - Audi Inc.

AIR RACES: June 2nd through the 6th there will be racing at Cape May County Airport, New Jersey. All classes will be there, including midgets, biplanes, homebuilts, and the big Unlimited Class WW2 fighters. If you have heard of the Reno Air Races in Nevada, and ever wanted to see them, here's your first chance on the East Coast to see such talent. It's the world's fastest motor sport. The location is near Rio Grande, N. J. That's off exit #4 of the Garden State Parkway. I hope to see you there on the weekend of the 5th - 6th.

OCEAN CITY CAVALCADE: June 12th and 13th there will be a sports car weekend in Ocean City. Saturday morning is a Concours, followed by a rally in the afternoon. That night is a banquet at the Flanders Hotel. Sunday is a Sprint at Atlantic City Speedway, a half mile paved oval. Then a Smorgasbord and Awards at the Vienna Inn nearby. This weekend event was put on for several years by the Harbor Sports Car Club, a very small local club. This year, several clubs are going together to put it on, and its' fate is a little uncertain at this time. It's a good event with lots of trophies donated by the City, so I hope it comes off again this year. How about a party at my house for all Riesentoters who come down?

Ed Lynch

WANTED

Personal Instruction For Tune-Up On My 1969 - 911T. Compensation Open To Discussion. Call Mayor Shanken. Phone 215/WA2-6895(before 6:00 PM) 215/MO7-4936 (after 6:30 PM)
reason: "I am just fed up with paying exhorbinant repair charges and having to bring the car back several times for corrections."

TECHNICALLY SPEAKING — by ed lynch

RUSTPROOFING

Do you remember all the articles a few years back about Texaco Rustproofing Compound "L", and how good it was in fighting rust? In the PCA booklet "up-fixin' der Porsche" there are several detailed explanations of how to use the product on your Porsche.

After seeing the devastating effects of only one winter on my car, I sprayed the underside with Compaound "L" last Fall, and by now I'm sure it was worth the few hours work. The spray is thin and watery, and slowly gels on the car. It can be sprayed on bare metal, clean undercoat, or rusty spots, and will still penetrate through to the good metal and stop the rust. That's the real value of the stuff - it goes through to the metal, and stops the corrosion chemically. I used only three aerosol cans at \$2.00 each to do the whole car, because you can only put it on so thick, and that's it. Ordinary undercoat can be sprayed over the Compound "L" for sound deadening and abrasive protection. After one winter's use, only minor touch-up on the scraped spots was necessary.

A light recoating next Fall might be a good idea to replace whatever chemicals have been used up in fighting off the rust. Why not try a can on your trouble spots and see how you like it? You say you don't have any? Fantastic!

HERE'S NEWS FOR ALL YOU 914 LOVERS:

In the workshop of a large Porsche dealer in Germany I saw a 914 with a new and different front end. This car had smooth front fenders; without the raised, narrow parking lights. It had a thinner, wraparound bumper with curved lights like a 911. The headlights were in a curved well in the bumper; and the whole treatment replaces the boxy look with a sweeping, clean curve like a fiat Dino or a Lotus Elan. Was it a '72? I hope so.

Results of Christmas Village
April 18, 1971

Class I

*1.	Bill Schmidt	912	92.12	T
2.	Dennis Koelmel	914	96.47	T
3.	Bernie Sitron	912	98.28	T
4.	Wayne Ratz	914	99.07	T/N
5.	Bob Parker	356C	99.10	
6.	Henry Bogatko	356B	99.32	
7.	Paul Stieff	912	99.62	N
8.	Goerge Howard	356B	100.01	
9.	Herb Barret	912	100.36	
10.	Bob Holland	914	100.97	N
11.	Ted Apple	914	101.18	N
12.	Bob Young Speedster		101.83	
13.	Mike Evangelists	356SC	102.07	
14.	Bob Couchon	914	103.18	N

Class II

1.	Ed Lynch	911S	94.13	T
2.	Don Reinhard	914-6	97.93	T
3.	David Deracola	911S	99.42	T
4.	Al Deracola	911S	100.90	
5.	Frank Walsh	911	103.46	
6.	Bob McCullen	911	103.87	

Class III

1.	Dollie Vitetta	356C	110.99	T/N
2.	Marilyn Weisman	912	114.79	T/N

Class IV

1.	Jim Haas	RSK	84.07	FTD
2.	Charles Keller	FV	95.90	

Class X (No Trophies)

Chuck Walter	VW	103.12
--------------	----	--------

* Time includes 2% penalty for racing tires
T/N means trophy in novice class
N means novice

PORSCHE

VALLEY FORGE

by vicki chatley

On Sunday, May 2nd, we had a great turnout for our charity event at Valley Forge Military Hospital. The day was overcast, but the rains held off until the very end.

It was inspiring to see so many Riesentoters turn out, even though some -- like the Reinhardts -- drove through rain to get there. I can't recall ever having seen so many kids, dogs and campers at any previous event.

The concours was first on the list of events, with 30 cars entered. It was a disappointment that the vets were not on hand to judge the cars, but our own members took over and did a good job. Among them were Bill and Judy Smith, Chuck Walter, Chuck Boschen, Al Willis, Lee Herskowitz, Bob Parker and Jay Chatley. Actually, I think Bob did the judging and Jay wrote down the score.

A pylon gymkhana followed. This, I must confess, I saw mainly through the car window as the weather got the best of my sinuses, and I spent a great deal of time sleeping off a super headache.

The best part of the day had to be the abundance of volunteer help. There was always someone ready to handle registration, add up scores, oversee the timer, clean up the grounds, pick up pylons. Although Joan Haas did become a little up-set when informed the pylons were to spend the night in her living room.

Quite a few patients came along to view the action; and had the weather been more cooperative, there would surely have been more.

This was the first time we have tried this type of event. Many comments were overheard on how well - planned the day was. The credit goes mainly to Activities Chairman Wayne Flegler who spent many, many hours organizing every detail of the event. And, of course, to the many Riesentoters who volunteered their help.

valley forge show

Class 356

1.	Vernon Lyle	1964	356C	235 T
2.	Peggy Ziegler	1961	356B	228 T
3.	Ralph Walters	1961	356B	217 T
4.	Wayne Flegler	1961	356B	210
4.	Bob Young	1957	Speedster	210
5.	Dollie Vitetta	1964	356C	208
6.	George Howard	1961	356B	204
7.	John Tiedeck	1958	Carrara Spd.	197
8.	Jerome D'Arcy	1961	356B	173
9.	Robin Pinch	1963	356B	149

Class 900

1.	Larry Ziegler	1971	914	255 T
2.	Don Reinhard	1970	914/6	245 T
3.	Ed Lynch	1969	911-S	234 T
4.	Bob Russo	1967	912	227
5.	Bob Holland	1970	914	218
6.	Al Deracola	1967	911-S	215
7.	Jack Klinges	1967	911-S	212
8.	Ted Apple	1970	914	210
9.	Richard Zakroff	1968	912	207
9.	Wayne Ratz	1970	914	207
9.	Vincent Talese	1967	911	207
10.	Karl Kruse	1968	911	200
11.	Bob McCullen	1967	911	198
11.	Gerald P. Segal	1970	911-T	198
12.	Paul A. Stieff	1969	912	197
13.	Bill Schmidt	1968	912	187

Competition Class

1.	Sandy Sadtler	1959	FII	209 T
2.	Bill Barker		Porsche Tow'd	195 T
3.	Jim Haas	1959	RSK Spider	167 T
4.	Charles Keller		FV	115



valley forge sprint

Class I

1.	Bill Schmidt	912	37.45	T
2.	David Duerr	912	37.71	T
3.	Bob Koerbel	356B	37.81	T
4.	George Howard	356B	37.97	
5.	Wayne Flegler	356B	38.04	
6.	Bob Holland	914	38.32	T/N
7.	Paul Stieff	912	38.41	N
8.	Dennis Koelmel	914	38.47	
9.	Jerome D'Arcy	356B	38.72	
10.	Ted Apple	914	39.21	
11.	Bernie Sitron	912	39.25	
12.	Wayne Ratz	914	39.50	N
13.	Lee Herskowitz	356SC	39.68	N
14.	Vernon Lyle	356C	40.02	N
15.	Chuck Boschen	356B	40.18	N
16.	Richard Zakroff	912	40.43	N
17.	Chuck Walter	356B	40.72	
18.	Bob Young	Speedster	41.34	
19.	Bob Parker	356C	41.79	
20.	Larry Ziegler	356B	42.27	N
21.	Will Edwards	912	43.41	N

Class II

1.	Ed Lynch	911-S	37.12	T
2.	Don Reinhard	914-6	37.69	T
3.	Jack Klinges	911-S	38.94	T
4.	Bob McCullen	911	39.53	
5.	Al Deracola	911-S	39.90	
6.	Dave Deracola	911-S	39.93	
7.	Joe Kennedy	911-T	40.19	T/N
8.	John Tiedeck	Carrara	40.46	N
9.	Vince Talese	911	40.54	

Class III

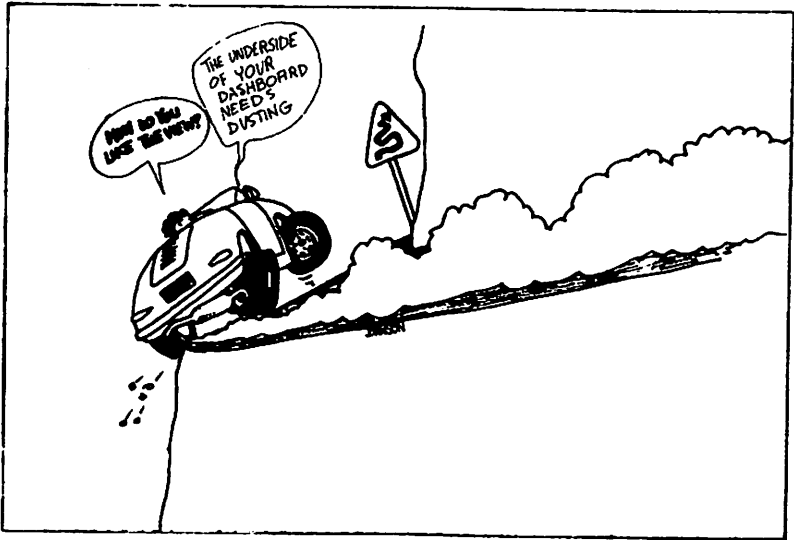
1.	Doris Reinhard	914-6	41.77	T
2.	Joan Haas	911-S	43.47	T
3.	Dollie Vitetta	356-C	43.60	T/N
4.	Robin Pinch	356-B	44.25	N
5.	Vera Barker	Porsche Tow'd	47.88	N

Class IV

1.	Jim Haas	RSK Spyder	33.46	FTD
2.	Sandy Sadtler	FII Porsche	37.42	T
3.	Jay Schneider	FV	39.42	
4.	Bill Barker	Porsche Tow'd	39.62	
5.	Charles Keller	FV	40.79	

OVERALL RESULTS

1.	Ed Lynch	534
2.	Don Reinhard	520
3.	Bill Schmidt	487
4.	Sandy Sadtler	484
5.	Jim Haas	467
6.	Jack Klinges	462
7.	Dollie Vitetta	458
8.	George Howard	429
9.	Bob McCullen	423
10.	Bill Barker	420



HOBO HILLCLIMB

The Northern New Jersey Region of PCA is hosting Hobo Hillclimb. This event will take place on Sunday, May 23, 1971 -- rain or shine. Registration will be from 10:00 a.m. until 1:00 p.m. and admission will be \$7.00 per entrant.

Entrants must be PCA members or applicants. Only Porsches will be allowed to run. There will be four runs up the hill. Helmet and seat belts will be required and your car must pass tech inspection.

Trophies will be awarded as such:
1-4 cars per class - 1 trophy, 5-7 cars in class 2 trophies, 8-10 cars per class - 3 trophies and 11 or more cars - 4 trophies. Dash plaques will be awarded to the first 40 entrants.

Go to Bellvale, N. Y. - take the best route to the center of Greenwood Lake, N. Y. -- Go north westerly on route 17A for 32 miles to a sharp left -- then turn on Cascade Rd. - proceed 1.75 miles to Hobo Hill. Any questions call Harry Slates, 601 S. Chestnut Street, Westfield, N. Y. 07090 telephone 201-233-7222

* * * * *

DVSA NEWS - by bill schmidt - OYSCC

E Production

1st - George Howard 356B
2nd - Ted Apple 914
3rd - Robt. Miles (driving Joan Haas old car)
356

Fastest Time of Day - Bill Schmidt - 912

Sterling F. Kresge

KRESGE'S FOREIGN CAR!

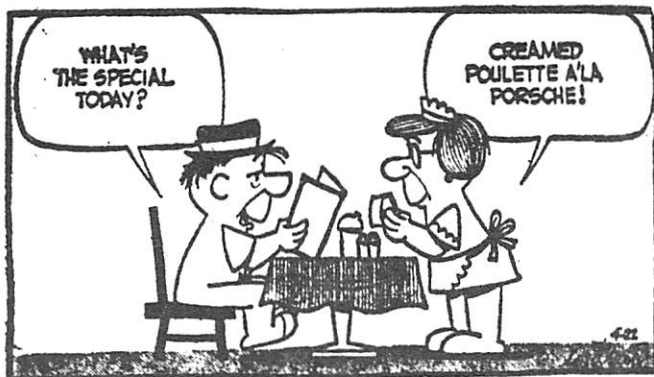
215/866-7925

539 Second Avenue
Bethlehem, Pa.

international events

- May 22-23 PHA Jefferson Hillclimb
Formula I - Monaco
L&M 5000 - Kent, Washington
- May 31 Trans-Am - Lime Rock, Connecticut
Indianapolis 500
World Mfg. - Nurburgring, Germany
- June 5-6 Formula I - Belgium
Trans-Am - Lexington, Ohio
PHA - Reading Hillclimb
- June 12-13 Cam/Am Bowmanville, Ontario
World Mfg. - Le Mans, France
- 19-20 Formula I Holland
Trans-Am Edmonton, Atlanta
PHA - Tuscarora Hillclimb.

SMIDGENS



noise from the gearbox

A SPECIAL NOTE OF THANKS to Al Willis of Willis Porsche - Audi of Burlington, N.J., for his help in judging the concours and to all the people who helped make the day a success. THANKS also to Bob Holbert for sending one of his cars over to the show. I HOPE THE GREAT turnout at Valley Forge is an indication of things to come. In the past four years I don't recall such active participation. FIGHT APATHY - DO SOMETHING - you'll feel better too. JEROME D'ARCY has owned 16 Porsches. IT WAS NICE to see ex-Riesentoter member Jack Jorgensen at the Valley Forge affair. BOB RUSSO'S car ran great on it's maiden voyage (he just rebuilt the engine) CONGRATULATIONS to Chuck and Joy Walter, who are awaiting the birth of their first child. THANKS TO VERN LYLE for the great pictures he's been taking at the sprints. This was Vern's own idea incidentally -- and a great one at that. CARRIAGE CRAFT has just finished John Chatley's car -- 10 coats of metallic grey lacquer - I'll bet it looks fantastic. THANKS TO Sandy Sadtler, Dollie Vitetta and Roger Newman for entering their cars in the Neshamity Mall auto show on behalf of the Riesentoter Region. DID YOU KNOW that the fly wheel bolts on a diesel locomotive are torqued to 1200 foot pounds and you thought your Porsche fly wheel was tough to torque. WE NOW HAVE 180 Riesentoter members. A LARGE PORSCHE parts warehouse, in Wichita, Kansas was burned to the ground recently. (taken from the Schooner, Great Plains Region, Nebraska)

PICTURES TO THE EDITOR

Note to any photographers attending hillclimbs -- we would appreciate some photos -- 2" x 3", Black and white only (high contrast). Thank you!



Y B H

PORSCHE | AUDI inc

**west chester pike
edgemont pa. 19028**

el-6-9000 ni-4-6222



Heinrich's Inc.

1301 Penn Avenue, Wyomissing
(Reading), Pa. 19610/Phone 373-4133

WOULD YOU BELIEVE?????

Somewhere hidden in the mess below are a number of Porsche-type words. Some of the words go up, some go down, some across and some diagonal as well as backward and forward. Some are two words (for example - a name). However, if it is a name, the two will be together. None of the words are scrambled. Here is a hint -- there are less than 20 words total.



J C O M P A L D S X A A A C Y M H S I T L
 I Y U O W N I S V T H U A T B A N A A A S
 A M A R O N A P M I I T R R N Y A N N T B
 T F A L A N J O H N S O N I A S T D A I I
 M R L Y H C E R N T E C T M O E O N H D N
 A T L E S O R S R S C R L A N I P H K B E
 A V O E L N W C I A S O S S L A L O M L K
 O O Y G H C P H R O E S M K N N E T Y A I
 Y E W D T O L R D F N S N D B H E N G U U
 A F H L O U E O R A S O E L D A R R E P E
 T R E N A R A N A K C M N A M R E G S U Y
 U J E R A S T Y V I O T U R W I T R T N J
 E A L E G A G M M N S N E I K T S C G K V
 R O S Y R F D A I T H M I S N T D L N T O
 B S A H A N T U N O I R A L L Y E T A O L
 L K T M T E M R N N I M O R N A E I V I A
 I M S P N D A I E N E H C S R O P M H I O
 S A N S T U T T G A R T N H G I S N A S X
 I D T I E M A T O E N S T A I N G I A R T

(this was taken from the Orange Coast Region)

PORSCHE - FERRARI - MERCEDES



Fine Automobile Cosmetics

(custom refinishing)

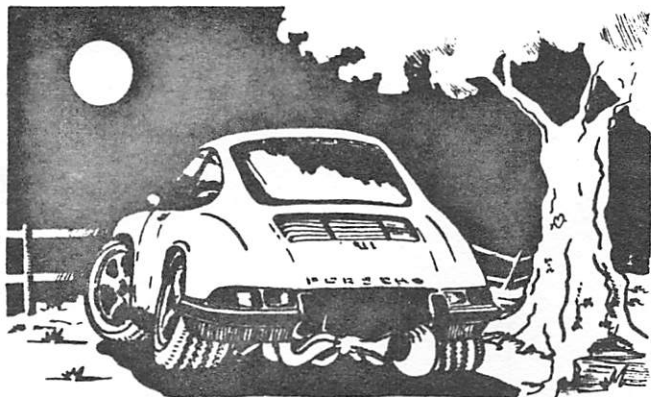
Carriage Craft

1615 Bethlehem Pike

Flourtown, Pennsylvania 19031

Vernon - 6 - 4777

!A discount will be extended to all PCA members!



"First you try to tell me it's a sedan, then you try to get me into the back seat!"

The Peddler

356B - 6 volt Marchal 90,000 candlepower replacement sealed beam unit - \$20.00. Porsche Technical Manual - Henry Elfrink - cover thru 65 - \$5.00. Contact Vincent R. Talese 215/272/8258 day or 215/275/1976 Eve. 520 Glen Valley Dr., Norristown.

* * * * *

Clymer's Handbook for 912 - \$5.00; float level gauge for Solex 40P11-4 - \$8; PCA car badge, \$3; Lucas driving lights (still in boxes) pencil beam SLR576, 12 volt, \$20 the pair. Contact Vern Lyle 215/536/3733 after 6.

* * * * *

1969 - 912 - 5 speed trans. AM-FM-SW - Burgundy coupe - garaged - all work documented at Moore Motors.

Contact: Chuck Raspa - 215/HO-5-3466 between 9 and 12 a.m.

* * * * *

1963 Super 90 coupe - Silver/black interior - AM-FM - new clutch - Best over \$1500 -- Barn sale on 356 parts.

Contact Bob Koerbel 215/527-2370

* * * * *

1962 - 356B - 1600N Twin Grill Coupe, Red with Black Interior Chassis, 210386 Engine P608338, 2nd Owner, Serviced Exclusively at Holbert's Since New. New Front End, Wheel Cylinders, Muffler, Clutch, Heater Boxes, Etc. Michelin Tires, Koni Schocks, Interior as New - Reason for Sale -- Want Speedster. \$1500 - Best Offer. Contact David O'Connoer, 349 Gerard Ave., Elkins, Park, Penna. 19117 phone 215/ME5-0567

* * * * *

1965 - 356C - Near Mint; White: Tuned Exhaust, Chrome Wheels, 5 Semperit Radials, AM/FM Blaupunkt, Coco Mats, Luggage/Ski Rack, Seat Belts MG Cover, Rebuilt 15,000 mi., New Clutch 4/71 Asking \$3150 Contact Lee Herskowitz, 506 Colonial West, Cherry Hill, N.J. 08034 ph. 609/667-5538

Officers

President - John Chatley
1479 Glenbrook Lane, West Chester, Pa. 19380
(215-696-1657)

Vice President - Chuck Walter
22 W. Southampton Avenue, Phila. Pa. 19118
(215-CH-8-2979)

Secretary-Treasurer - Joan Haas &
Assistant Activities Chairman - Jim Haas
Darby Road, Haverford, Pa. 19041 (215-MI-2-8087)

Membership Chairman - Bob Russo
1351 Hi-View Drive, Southampton, Pa. 18966
(215-355-4610)

Activities Chairman - H. Wayne Flegler &
Der Gasser Editor - J. Bonnie Flegler
228 S. Warner St., Woodbury, N.J. 08096 (609-848-0446)

Technical Chairman - Robert Koerbel
275 Bryn Mawr Ave., Bryn Mawr, Pa. 19010
(215-527-2370)

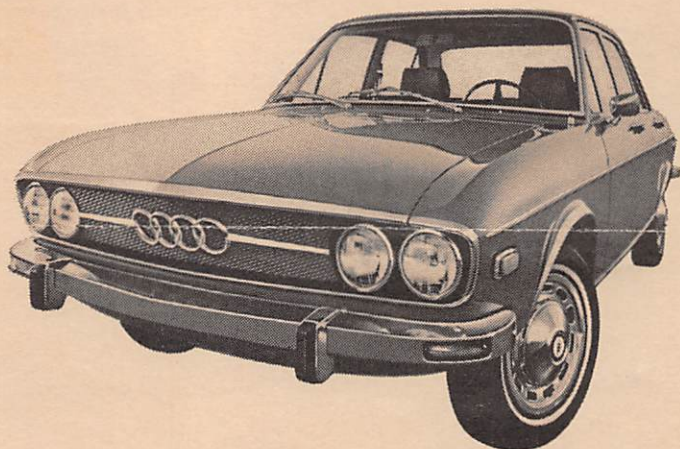
Contributing Editors - Ed Lynch
1 Warwick Ave., Ocean City, N.J. 08226 (609-399-6535)
&

Wayne Ratz
Robt. Barry Apts. I-7, Westville, N.J. 08093
(609-848-6010)

Printed by AUTO PRINT INC.
8 Cooper Street
Woodbury, New Jersey 08096
609-845-4470

cover :

Collage of past sprints by
Wayne Flegler.



**The \$3,600 Audi
has the same steering system
as the \$38,400 Ferrari.**

It's called rack-and-pinion steering.

And it's the simplest, most direct, most responsive type of steering system any car ever had.

It's precisely this simplicity and directness that gives you such an uncanny feel of the road. And the better your feel of the road, the more control you have over the car.

**MOORE
PORSCHE | AUDI
inc**

THE ONLY DEALER IN PHILADELPHIA

For Sales:

Joseph T. Farrell
Hubert Krisinger
Larry Caldwell
Al Feuerstein

For Service:

Joseph Tiesler
Dieter Butsch

Next to the Wyoming Subway Station:

4620 N. BROAD ST., PHILA., PA. 19140
PHONE: (215) 457-2800



return to:
RIESENTOTER REGION
Porsche Club of America
48 Glenbrook Lane
West Chester, Pa. 19380



~~██████████~~
~~██████████~~
MALVERN, PENNA. 19355

First Class

*Soft
as a
Kiss*



80% BLENDED SCOTCH WHISKY (EIGHTY PROOF) IMPORTED BY BAKER BROS. DISTILLERS LTD. PHILA.

