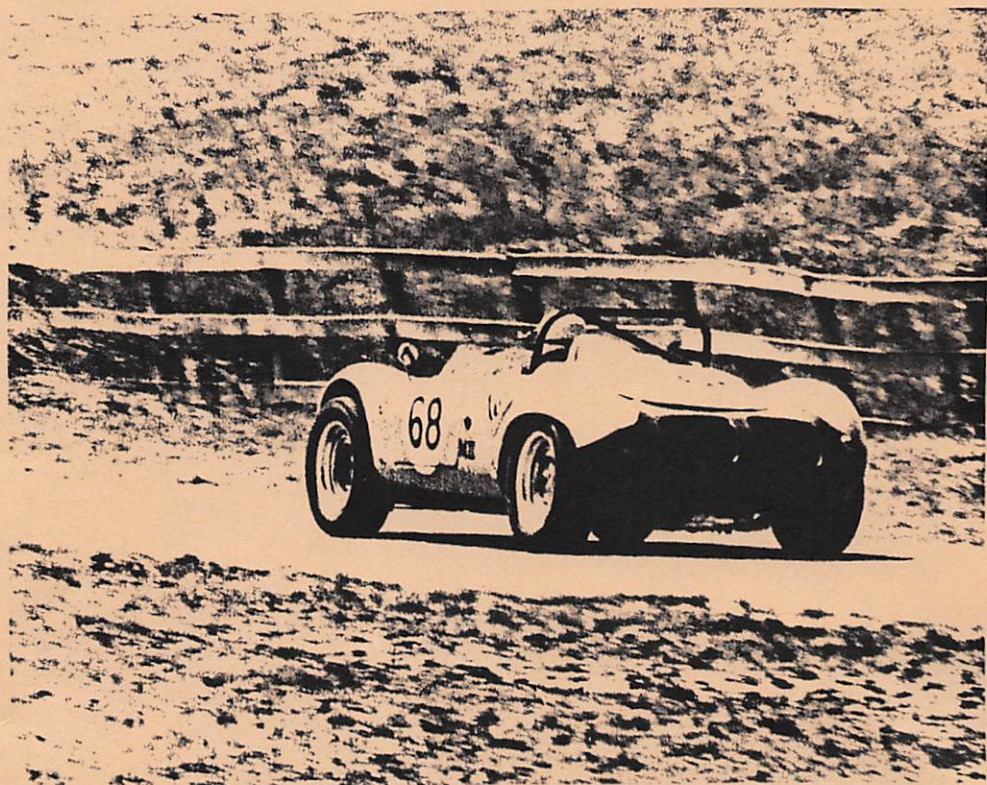


# DER GASSER



SEPTEMBER 1980



riesentöter region  
porsche club of america



# Mail Order Tire Prices in Philadelphia!

Tires by  
**NTW**  
National Tire Wholesale

SPECIALISTS IN MAG AND WIRE WHEEL  
MOUNTING AND BALANCING  
SPECIALISTS IN HIGH PERFORMANCE TIRES  
BALANCING ON THE HOFFMAN  
GEODYNA 55 SPIN BALANCER  
ALIGNMENT & SHOCK INSTALLATION  
—Bilstein, Koni, Gabriel shocks—

## RV HEADQUARTERS

**Sport, Race, Truck, Camper, Motorcycle Tires**

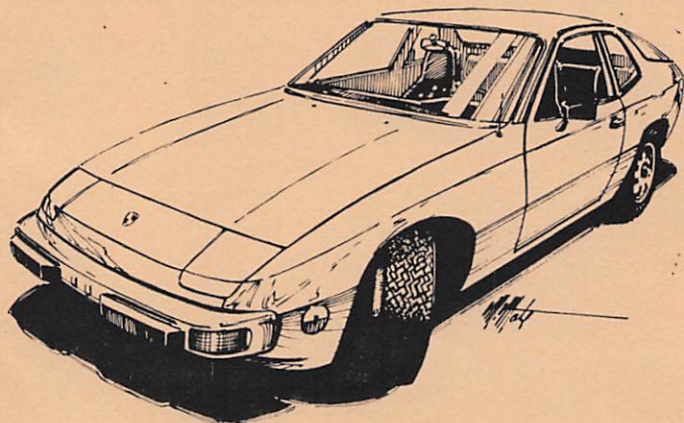
Michelin, Semperit, Bridgestone, Pirelli,  
Goodyear, Goodrich, General  
Stratton, Laramie, Continental, Metzler

Show Your Membership Card For Dealer Prices  
(Only available at Pennsylvania NTW's)

### WAREHOUSE/SHOWROOM LOCATIONS:

WILLOW GROVE	KING OF PRUSSIA
2435 Maryland Road	180 Church Road
657-6600	265-0900

LAWRENCE PARK  
INDUSTRIAL PARK  
651 Parkway  
356-8300



COVER: An oldie but goodie by Vern Lyle

# meeting notice!

BEER

OKTOBERFEST

BEER

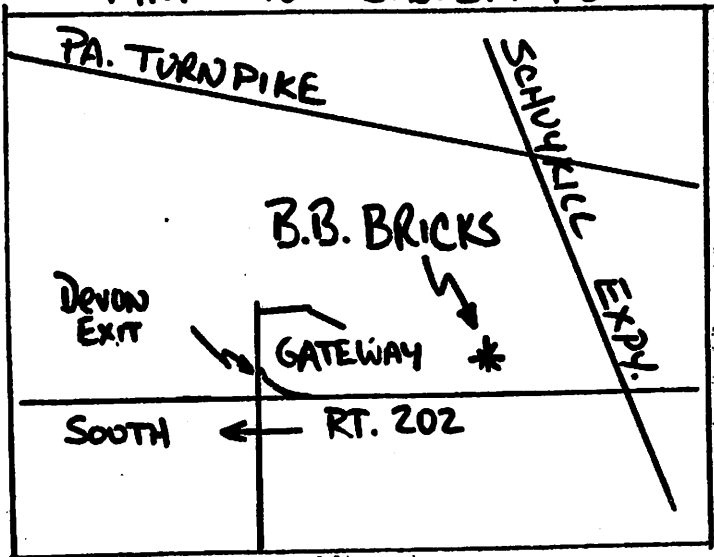
DATE  
CHANGE!!!

October 1, 1980  
B.B. Bricks  
8:00 P.M.

FRANKFURTERS  
SAUERKRAUT  
FIXINS  
BEER

COST: \$2.00 Per Person  
\$4.00 Per Couple  
Guests - \$2.00  
New Members - \$2.00  
Honorary Members - \$2.00  
Relatives - \$2.00

## MAP TO B.B. BRICKS



# new members



*Porsche people have  
More Fun!!*

Jack Robinson  
Ebersole Thomas  
L.T. Tomb  
Neil H. Cornell  
Barry T. Franco  
Evan Henderson  
Bruce H. Abbott  
Norman Wolgin



By the way, this event is not limited to Porsches--so invite your friends and come enjoy a drive in the country.

Melody and Vern Lyle  
Box 265B  
Kintnersville, Pa. 18930 USA

DVSA SPRINT JUNE 15, 1980

<u>Class</u>	<u>Time</u>	<u>Car</u>
<u>B/stock</u>		
2nd J. Goldfarb	56:054	speedster
<u>B/Prepared</u>		
2nd V.Lyle	53:977	911T
<u>C/stock</u>		
1st B. Carrington	54:208	914
3rd A. Ahrens	55:458	356B
10th C. Keller	58:040	924
<u>A/stock</u>		
1st A.Shield	52:240	911S
2nd G.Rosenberg	53:043	911
3rd B. Hiner	54:369	928
4th A. Lori	58:868	930
<u>C/Prepared</u>		
2nd P.Wolsack	54:693	924
4th T. Sechowicz	57:367	924
<u>Novice</u>		
2nd L. Woscyna	57:781	911E
4th D. Galbraith	58:841	911T
<u>E/stock</u>		
2nd B. Ahrens	57:290	Volvo
3rd J.Chatley	58:978	Volvo
<u>Super Mod</u>		
2nd Bob Russo	47:913	911S
<u>Ladies</u>		
	<u>Index</u>	
2nd T. Tuccillo	3.991	914T
4th M. Lyle	8.666	911T



## GIANTKILLER IV RALLY-OCTOBER 12

If you have never done a rally or don't even know what it is or if you have even the slightest interest, this is the rally for you. If you miss this, you'll regret it forever. Next year, gas may cost a lot of money or you may not have a willing and somewhat sane Rally-master (that's what we're called among cognoscenti). Actually, we get called a lot of other things too, but you buy that privilege with the entry fee. By the way, "dumb" and "stupid" don't faze us-if your criticism is no more inventive than that, you're probably angry at your own error.

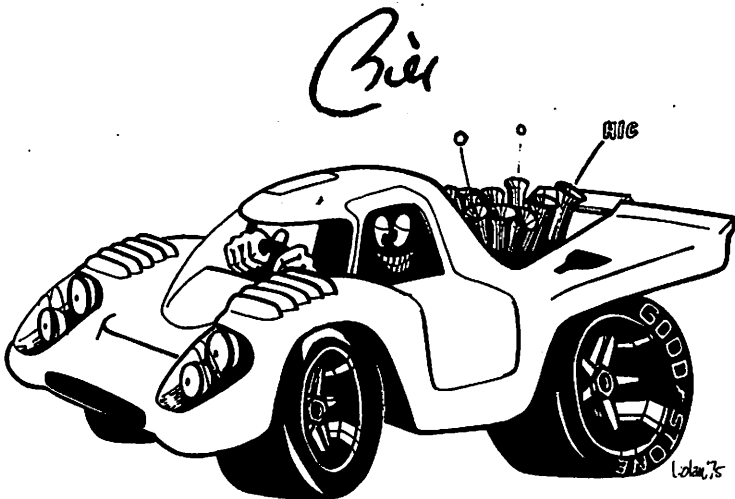
The neophytes (and some of you old heads) have to understand that completing the rally route successfully is really very easy. We have to add some degree of difficulty so that everyone's score won't be 100%. If everybody ties for first, what fun is that? To score well, you only have to be attentive to your surroundings. Now everybody can do that, so you have as much chance as the next guy.

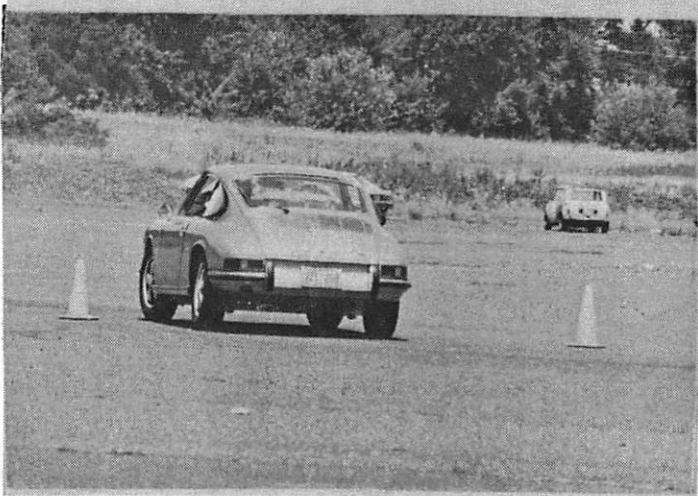
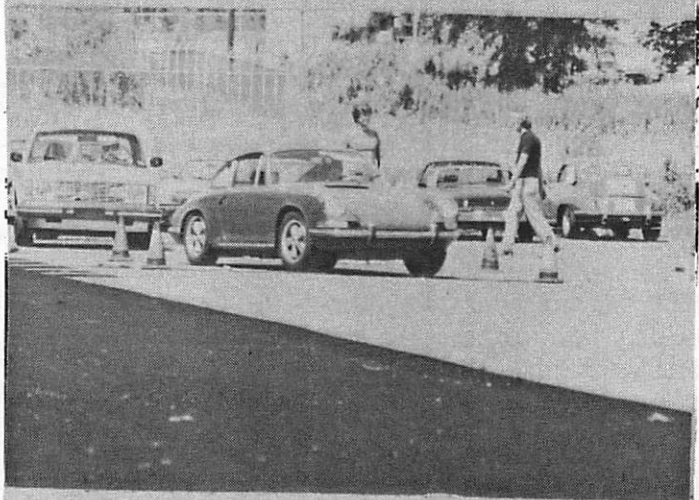
The starting point for the rally is Holbert's Porsche-Audi in Warrington (Rt 611 North from Willow Grove exit of Pa. Tpk) and it begins at 1:01 pm. We will finish at a friendly, informal tavern and since we need to know how many folks will be there YOU MUST PRE-REGISTER. Send us a check (payable to Riesentoter Region, PGA) for \$5 per car-deadline for registration is October 6.

# president's message

Websters' Seventh Collegiate Dictionary does not admit the existence of the word xenophile. However it means, in usage, one who has an affinity for things foreign. I know that all of us will admit their fondness (at least most of the time) for our Porsche(s). However, many people say "buy American, I do." I think that buying American is difficult if not impossible to do today. If you buy an "American-made" TV, it has either foreign parts or foreign labor in it, ditto watches, cars, toasters, clothing, shoes, and on and on. I am sure that all have seen the bumper sticker stating that Real Americans Buy American Cars. It is only several months ago that the WSJ had a series of articles on the American automobile industry which illustrated in no uncertain terms that these automakers are dependent upon imported parts and materials for their production.

What I am saying is that we must realize that in today's world one cannot escape the foreign influence. So if some of us have not yet reached the stage of xenophilia, hopefully none of us are xenophobic, (a word which is in Webster).





**D**

**S**

**SPR**

AUGUST



V



A



INT



17, 1980

# OFFICERS

## PRESIDENT

Bill Smith  
358 Beverly Road  
Upper Darby, PA 19082  
623-8789

## VICE-PRESIDENT

Joe Shelanski  
1321 Farrington St.  
Phila., PA  
879-9478

## SEC'Y/TREASURER

Don Galbraith  
13 Cobblestone Dr.  
Paoli, PA 19301  
644-9079

## MEMBERSHIP

John Reker  
12 Byre Lane  
Wallingford, PA 19086  
566-9325

## SOCIAL

Don & Linda Applestein  
11 Furness Lane  
Wallingford, PA 19086  
565-5716

## EDITORS

Bob & Maria Holland  
305 Staghorn Way  
West Chester, PA 19380  
436-6577

## TECH CHAIRMAN

Bob Patton  
138 Merlin Road  
Phoenixville, PA 19460  
935-1725

## COMPETITION

Wayne Flegler  
958 Genesee Road  
Clarksboro, NJ 08020  
609-423-6659

Bob Russo  
400 W. Monument Ave.  
Hatboro, PA 19040  
674-4756

## DVSA REPRESENTATIVE

Axel Shield II  
1022 Belvoir Road  
Norristown, PA 19401  
279-1809

## PHA REPRESENTATIVE

Jess Holshouser  
P.O. Box 249  
Pipersville, PA 18947  
766-8201

## GOODIE STORE

John English  
501 N. Orange St.  
Media, PA 19063  
565-5075

## PAST PRESIDENT

Bob Holland  
305 Staghorn Way  
West Chester, PA 19380



# ACHTUNG!

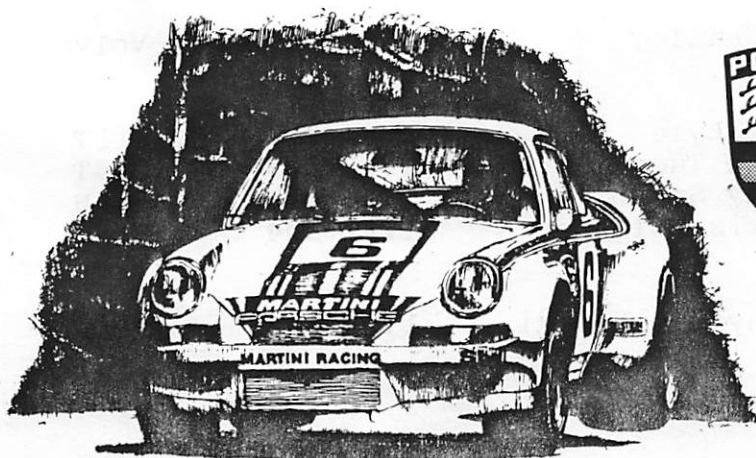
- Sept. 27 - NNJR Drivers School, Pocono International
- Oct. 1 - Riesentoter Region Monthly Meeting
- Oct. 12 - Riesentoter Region GiantKiller IV Rally
- Oct. 26 - Porsche/Corvette Challenge, Hershey, Pa.
- Dec. 13 - Riesentoter Region Annual Banquet



## NORTHERN NEW JERSEY REGION POCONO DRIVERS SCHOOL SEPTEMBER 27 & 28

Northern New Jersey Region of Porsche Club of America will host another of its drivers schools at Pocono International Raceway. For more information look in next month's Der Gasser or contact:

Jack Gorman  
137 Center Ave.  
Chatham, N.J. 07928



# dvsa news

## Riesentoter Finishers in DVSA Sprints

### DVSA SPRINT AUGUST 17, 1980

<u>Class</u>		<u>Time</u>	<u>Car</u>
<u>A/stock</u>			
1st	Bob Koerbel	1:04:105	911S
2nd	Gus Rosenberg	1:05:478	911
3rd	Axel Shield	1:06:839	911S
4th	Don Galbrath	1:07:527	911T
<u>A/Mod</u>			
2nd	Bob Russo	1:00:724	911S
5th	Bob Holland	1:04:783	911S
<u>B/stock</u>			
4th	Mike Schultz	1:12:755	356B
<u>B/P</u>			
1st	Vern Lyle	1:05:071	911T
4th	Bill Smith	1:11:607	356B
<u>C/stock</u>			
5th	T. Yarema	1:14:017	914
<u>C/P</u>			
1st	Harry Kintzi	1:09:883	924
<u>E/S</u>			
2nd	J.Chatley	1:11:588	Volvo
<u>Ladies</u>			
1st	Mel Lyle	1:09:814	911T
2nd	Tina Tuccillo	1:12:313	914T
6th	Judy Smith	1:16:818	356B
7th	Maria Holland	1:12:304	911S
<u>Novice</u>			
5th	Tony Checkowski	1:17:690	911S

# hillclimbing

## Giants Despair Hillclimb

The oldest hillclimb in the United States was the site for another running -the 75th Anniversary hillclimb held on August 23rd and 24th. It was the second event of the season counting toward PHA season championship points- regretfully only the second event.

Some 65 drivers participated in the twelve group PHA structure of combining SCCA road race classes and a few PHA holdover classes. We are accommodating the new GT and Formula 440 Scca classes this year for the first time.

The class structure is:

Group 1 (Touring I, II,III, SSA, SSB,SSC, D-Sedan)

Group 2 (B-Sedan, GT-2)

Group 3 (Formula Vee)

Group 4 (H Production)

Group 5 (G Production)

Group 6 (F Production, GT-3)

Group 7 (E Production I)

Group 8 (E Production II)

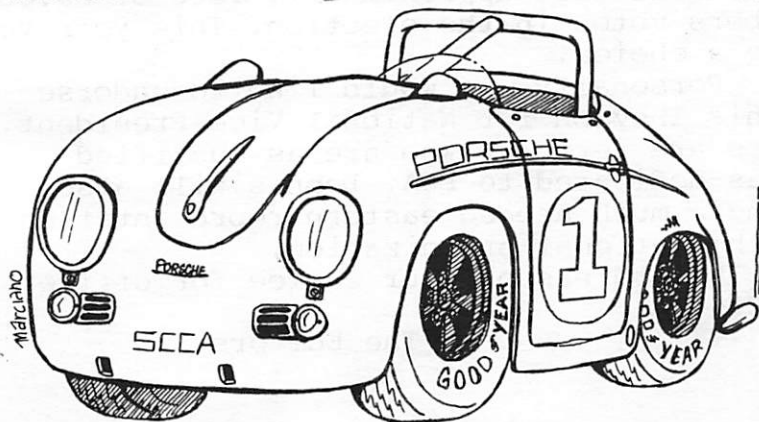
Group 9 (D Production, C Production)

Group 10 (B Production, A-Sedan, A Pro, GT-1)

Group 11 (Mod I, Formula II, Formula440)

Group 12 (Mod II, Mod III, Formula I, ASR, BSR)

It's quite a mixture, but the groups are arranged according to roughly equivalent performance.





## HILLCLIMBING CONTINUED

Only two of our Riesentoter team members were able to make the event: Jess Holshouser and Carl Ulrich both driving speedsters who finished 1st and 2nd respectively in Group 8 (EPII). The weather was comfortable in the mid-80's, clear and not too humid-not typical weather for Giants when it used to be run in July. The local community really supports the event in all ways.

PHA has two remaining hillclimbs on its calendar to conclude the season. Duryea (tentative) September 20-21 and Weatherly October 11 and 12. We all hope the 1981 schedule is much improved.

Jess Holshouser  
8-29-80



You will be receiving your ballot for the election of PCA national officers with your next months PANORAMA. We urge you to vote. Last year approximately 1500 of 30,000 members voted in the election. This year you have a choice.

Personally, we would like to endorse Dennis Thovson for National Vice-President. There are very few who are as qualified or as dedicated to PCA. Dennis will also bring a much needed eastern representation to the national organization.

Regardless of your choice for office,  
**VOTE!**

The Editors

# FOR SALE

1968 912/5 Coupe, 99 44/100% rust free, strong rebuilt motor with Webers. Many goodies. Needs paint-\$5800. Vern Lyle 699-5311 ext. 6025 daytime; 346-8651 evenings.

911 Parts-18mm front and 22mm rear torsion bars; factory sway bars complete except brackets; S rocker trim; Bilstein rear shocks for 72-74 911; factory leather steering wheel; taillight lenses (silver trim); parking light lenses (black trim); brown sisal mats for 356 (new).  
Bob Holland-436-6577 evenings



## PRECISION MOTOR WORKS



**sales  
repairs parts**

**bob koerbel  
bryn mawr, pa**

**roberts rd  
527-6025**



# COMMITTED

to high performance machinery . . .  
to selling it, to servicing it  
and to racing it.

2097 North 63rd Street, Phila./GR 3-6400

**MIKE TILLSON**

**Motorcar Service and Sales**

# DER GASSER

305 STAGHORN WAY  
WEST CHESTER, PA. 19380

**to:**